

190 WEST 231ST STREET

BETWEEN BROADWAY & ALBANY CRESCENT | KINGSBRIDGE

 **CHIPOTLE**

**PREMIUM RETAIL
FOR LEASE**
800 SF Ground Floor
7,700 SF Lower Level

Golden Dragon
Chinese Cuisine

AVAILABLE
SPACE

190 WEST 231ST STREET

BETWEEN BROADWAY & ALBANY CRESCENT | KINGSBRIDGE

PROPERTY HIGHLIGHTS

- Lower level retail space with strong co-tenancy
- Largest retail space available in the neighborhood
- High ceilings and ample storage space
- Private lobby with convenient elevator access

• Neighbors include:
Kentucky Fried Chicken, Wingstop, Boost Mobile, Eterprise, IHOP, Dunkin', Metro by T-Mobile, Chase, Chipotle, Walgreens, Foodtown, Citibank, MattressFirm, Staples, Papa John's, UPS Store, Ponce bank, Carter's, Aldi

SIZE: 800 SF Ground Floor
 7,700 SF Selling Lower Level

FRONTAGE: 11'

CEILING HEIGHT: 11.5' Ground | 10.5' LL

POSSESSION: Immediate

ASKING RENT: Upon Request

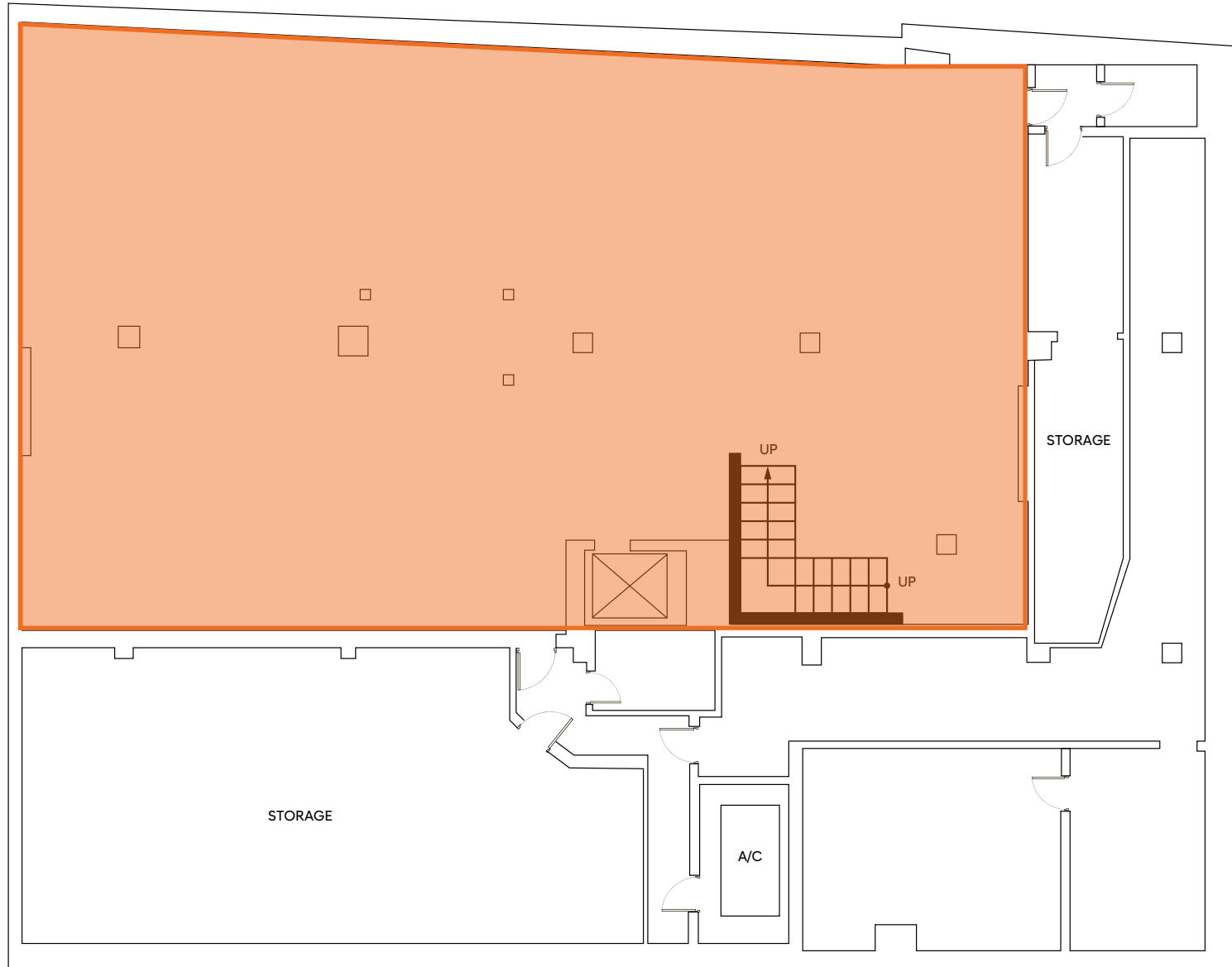
TRANSPORTATION: 1



190 WEST 231ST STREET

BETWEEN BROADWAY & ALBANY CRESCENT | KINGSBRIDGE

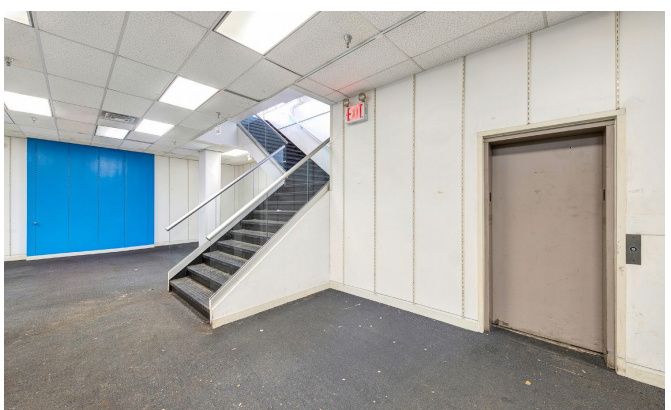
Floor Plans:



190 WEST 231ST STREET

BETWEEN BROADWAY & ALBANY CRESCENT | KINGSBRIDGE

Interiors:



190 WEST 231ST STREET

BETWEEN BROADWAY & ALBANY CRESCENT | KINGSBRIDGE

FOR MORE INFORMATION,
PLEASE CONTACT:

ALLIE DWECK

646.483.2273 | ADweck@ksrny.com

EZRA FALACK

718.415.0095 | EFalack@ksrny.com

SOLOMON SHARABY

718.986.7149 | SSharaby@ksrny.com

