

# 398-402 Bridge Street

Between Fulton & Willoughby Streets  
Downtown Brooklyn

SPACE A

**J FULTON FABRIC**

402 Bridge St

718-858-1596

**Express Hair Salon**  
Nails - Barber  
400 Bridge Street 718-403-0031

**DOWNTOWN EYE CARE**

18 865.8159

PHYSICIANS & SURGEONS

**Delox JUICE BAR GRILL**

398

SPACE B

# 398 Bridge Street

## 402 Between Fulton & Willoughby St Downtown Brooklyn

### PROPERTY HIGHLIGHTS

- All uses considered
- Potential to utilize the Second floor as 2-story space
- Steps away from the Jay Street-Metrotech Terminal Complex, which sees an average of 7.5M riders annually
- High foot traffic area seeing 100K+ pedestrians weekly
- Steps away from Prime Downtown Brooklyn shopping district which is home to several high-profile retailers

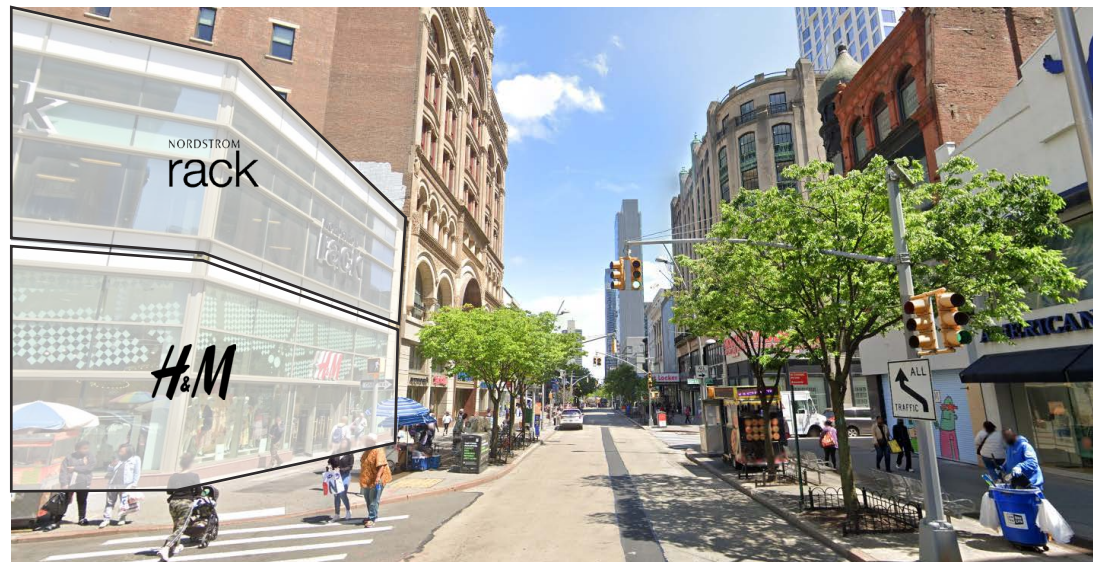
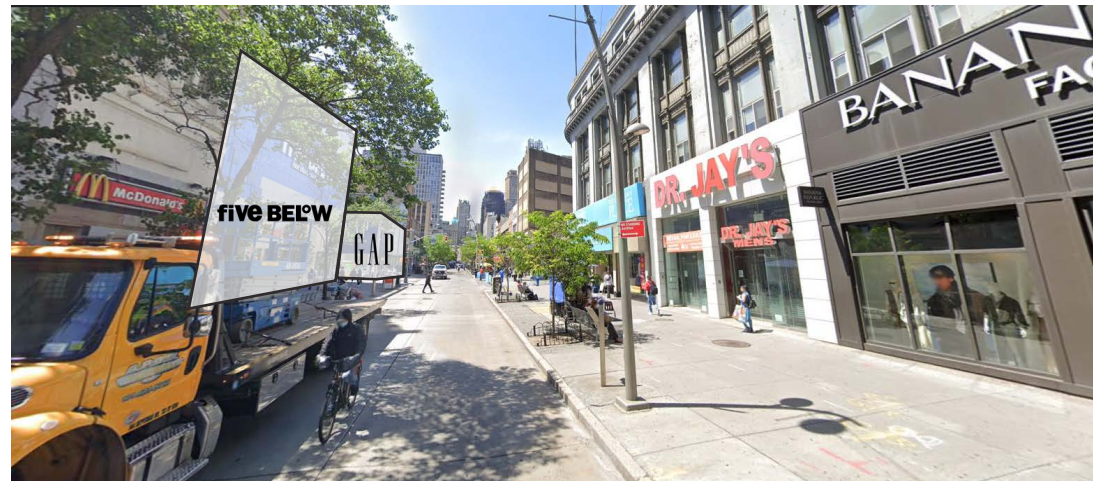
**SPACE A** 1,145 SF Ground Floor  
7,500 SF 2nd Floor/Mezzanine

**SPACE B** 937 SF Ground Floor

**POSSESSION** Immediate

**TRANSPORTATION** 2 3 A C R F

**NEIGHBORS**



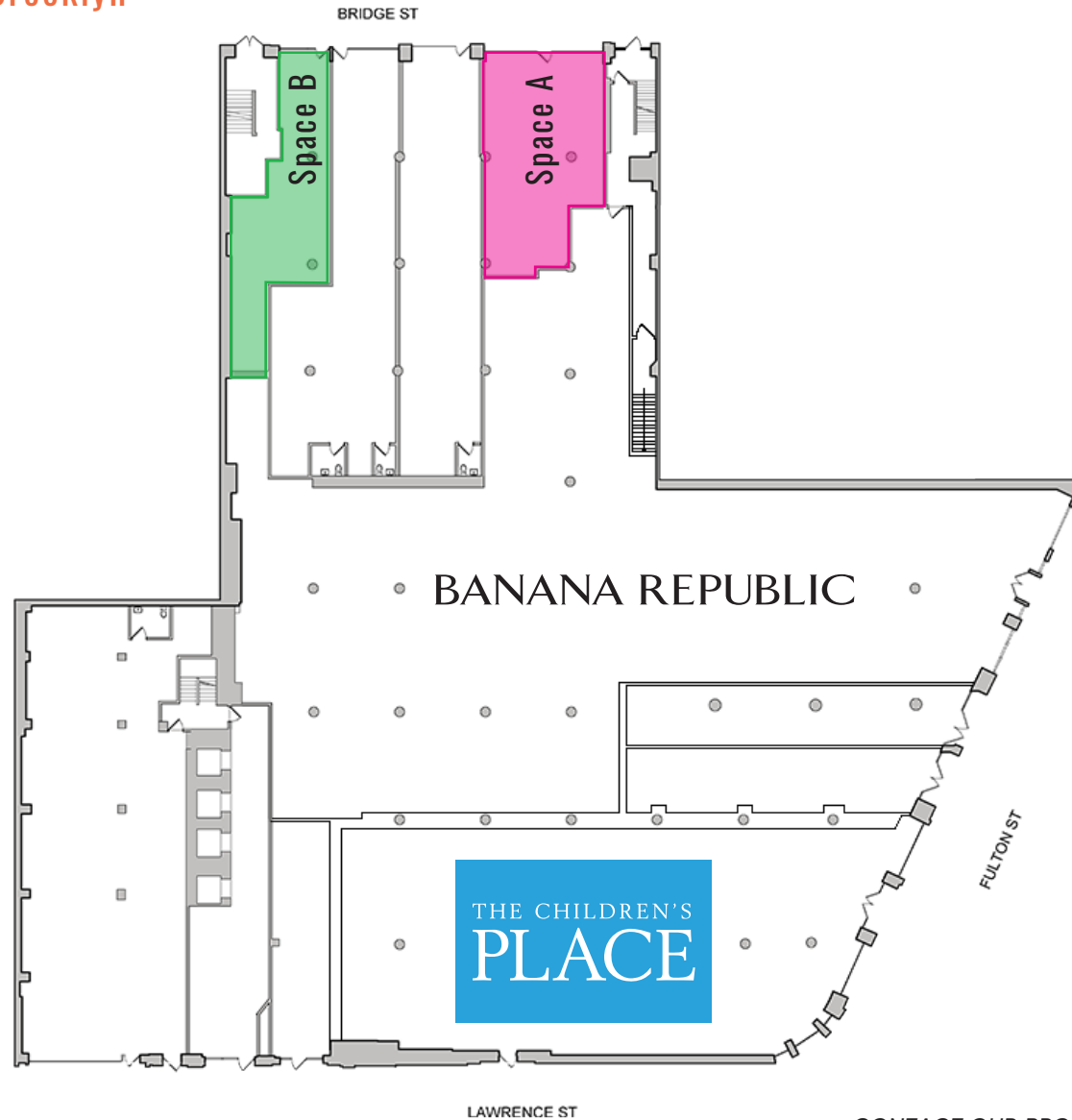
# 398 Bridge Street

402 Between Fulton & Willoughby St  
Downtown Brooklyn

Ground Floor:

Space A - 1,145 SF

Space B - 937 SF



CONTACT OUR BROKERS FOR MORE INFORMATION



All information supplied in this marketing presentation and/or flyer is from sources deemed reliable and is furnished subject to errors, omissions, modifications, removal of listings from sale/lease and to any listing condition. Any square footage, dimensions, floor plans and/or technical data set forth are approximations and are subject to further elaboration/confirmation.

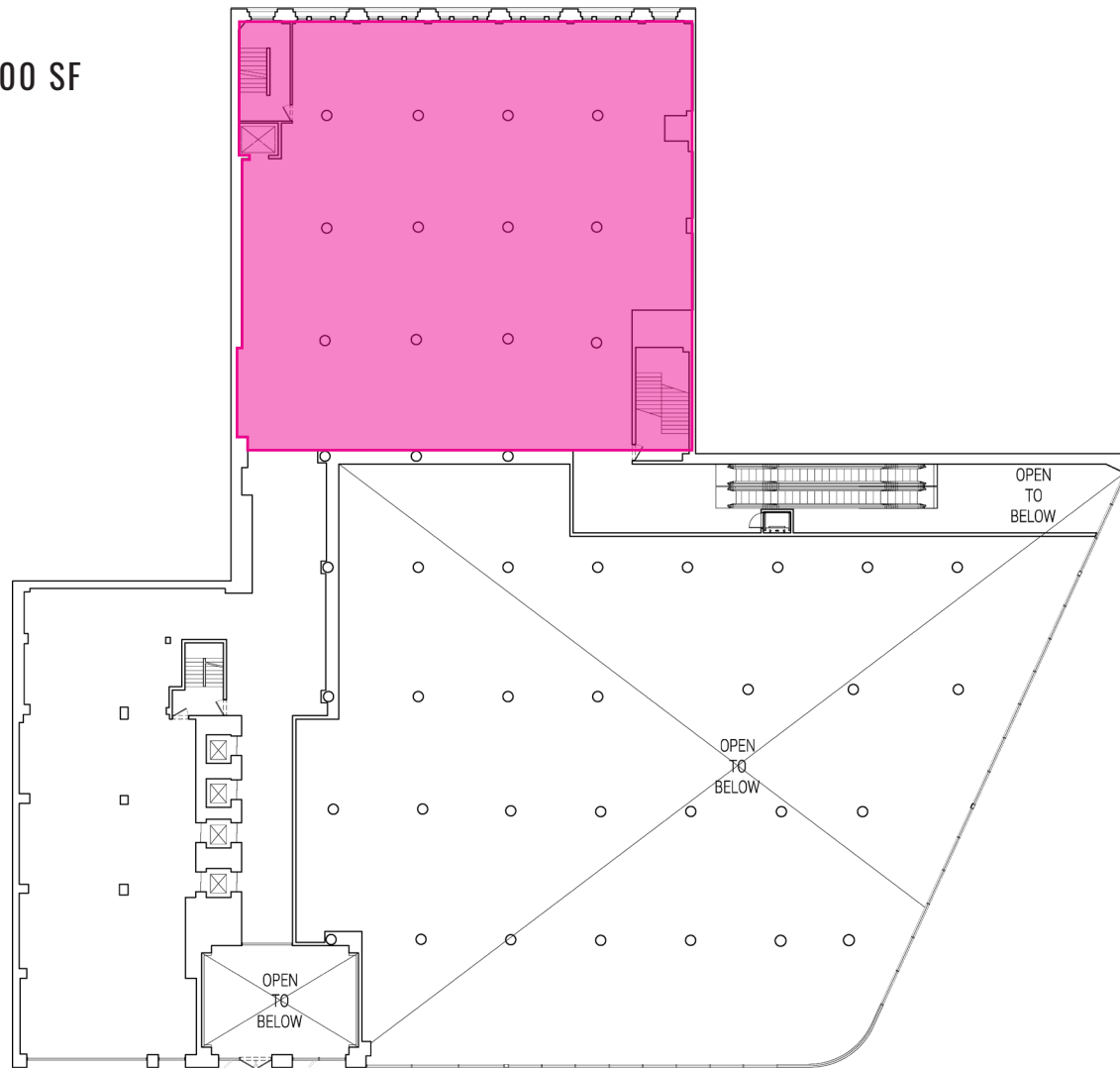
**FRED JEMAL**  
FJemal@ksrny.com  
917.359.6359

**SOLOMON SHARABY**  
SSharaby@ksrny.com  
718.986.7149

# 398 Bridge Street

402 Between Fulton & Willoughby St  
Downtown Brooklyn

Floor Plan:  
2nd Floor/Mezzanine - 7,500 SF



CONTACT OUR BROKERS FOR MORE INFORMATION



All information supplied in this marketing presentation and/or flyer is from sources deemed reliable and is furnished subject to errors, omissions, modifications, removal of listings from sale/lease and to any listing condition. Any square footage, dimensions, floor plans and/or technical data set forth are approximations and are subject to further elaboration/confirmation.

**FRED JEMAL**  
FJemal@ksrny.com  
917.359.6359

**SOLOMON SHARABY**  
SSharaby@ksrny.com  
718.986.7149

# 398 Bridge Street

## 402

Between Fulton & Willoughby St  
Downtown Brooklyn



CONTACT OUR BROKERS FOR MORE INFORMATION



All information supplied in this marketing presentation and/or flyer is from sources deemed reliable and is furnished subject to errors, omissions, modifications, removal of listings from sale/lease and to any listing condition. Any square footage, dimensions, floor plans and/or technical data set forth are approximations and are subject to further elaboration/confirmation.

**FRED JEMAL**  
FJemal@ksrny.com  
917.359.6359

**SOLOMON SHARABY**  
SSharaby@ksrny.com  
718.986.7149