

69

GRAHAM AVENUE



BETWEEN MOORE & SEIGEL STREETS | WILLIAMSBURG

PHYSICAL THERAPY ← ENTRANCE
718-648-0888

PT CITY PHYSICAL THERAPY (718) 648-0888

WE ACCEPT ALL MAJOR INSURANCES

One more step make your dream closer

Manual Therapy

RETAIL FOR LEASE



Solomon Tbeile
917.215.5471

65

RETAIL SPACE FOR LEASE

Ariel Baradaran
646-535-1884

grocery
teleportation
station.

Delivered
in 15 mins.



69 GRAHAM AVENUE

BETWEEN MOORE & SEIGEL STREETS | WILLIAMSBURG

PROPERTY HIGHLIGHTS

- Newly whiteboxed space
- New HVAC
- L shape building
- Great visibility with large signage opportunity
- Space can be divided
- 3 means of egress
- 2 bathrooms in place
- Landlord will build to suit for qualified tenants

SIZE

Ground Floor 5,500 SF
(reasonable divisions possible)
Mezzanine 1,200 SF

FRONTAGE

20' on Graham Avenue
25' on Moore Street

CEILING HEIGHTS

11'

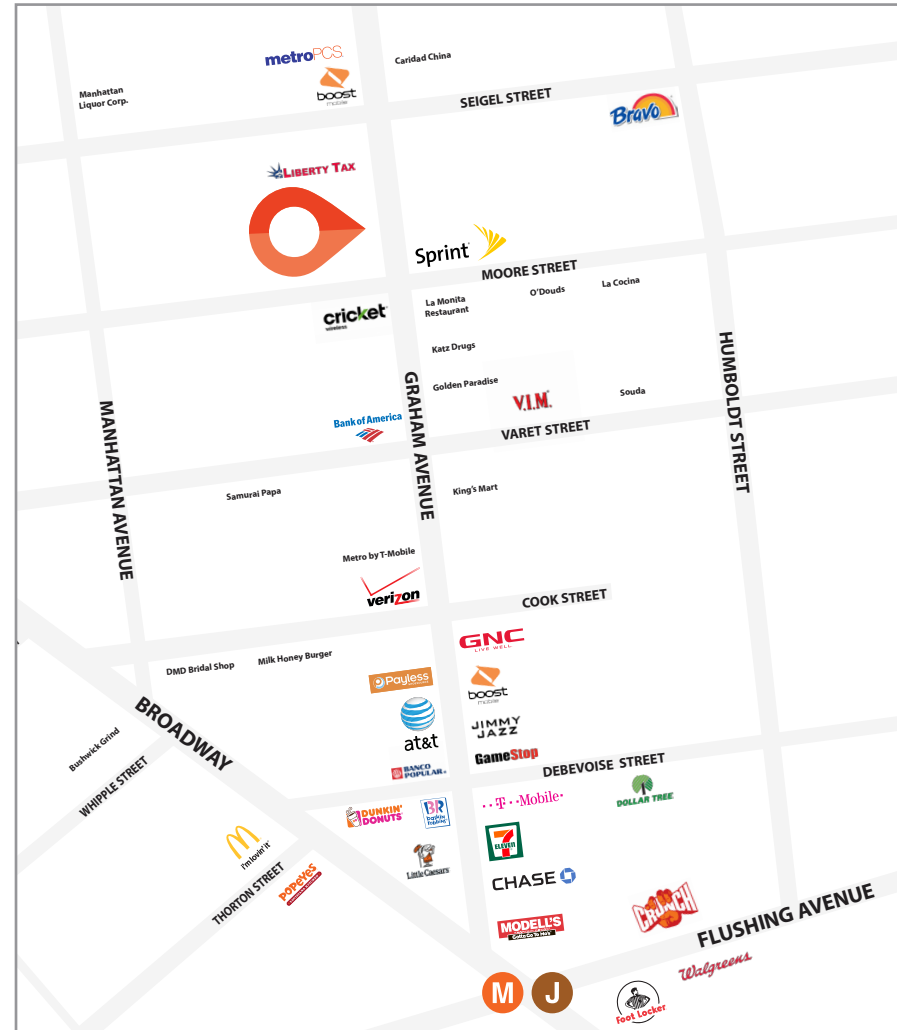
ASKING RENT

Upon Request

POSSESSION

Immediate

TRANSPORTATION



CONTACT OUR BROKERS FOR MORE INFORMATION

SOLOMON TBEILE
STbeile@ksrny.com

917.215.5471

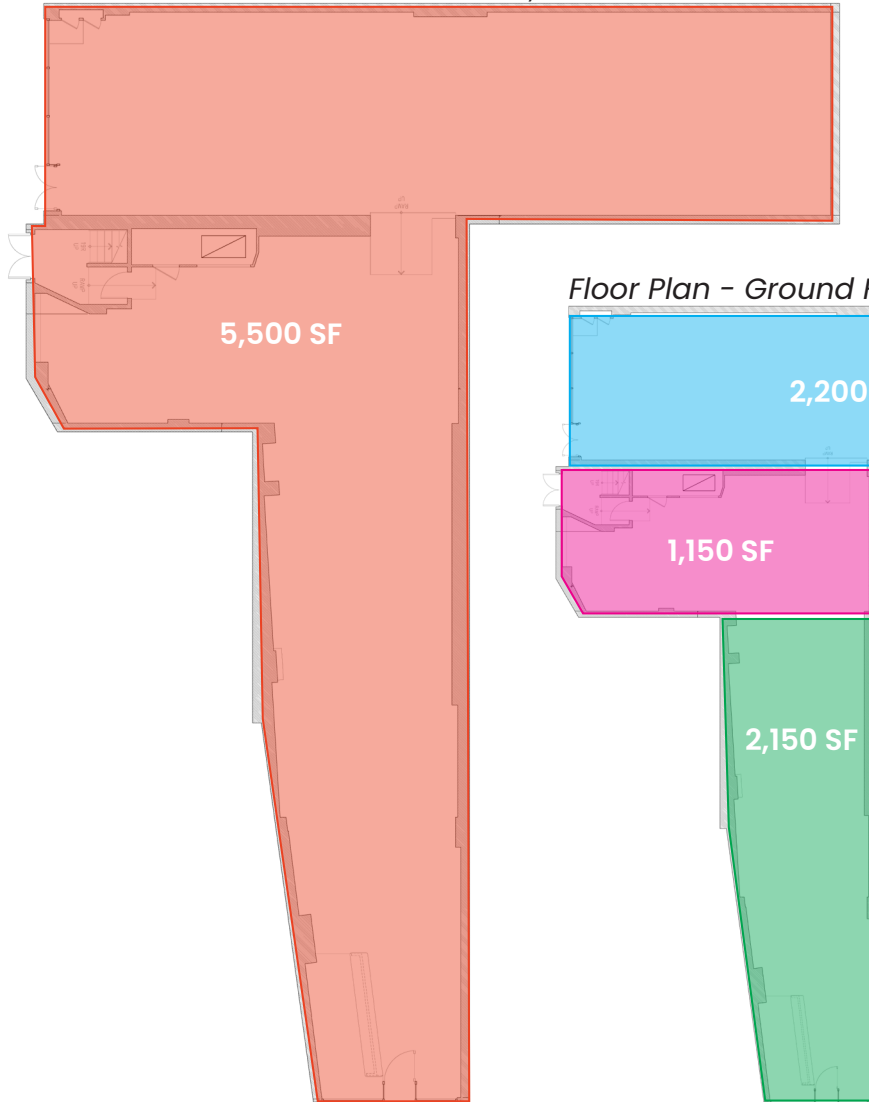


All information supplied in this marketing presentation and/or flyer is from sources deemed reliable and is furnished subject to errors, omissions, modifications, removal of listings from sale/lease and to any listing condition. Any square footage, dimensions, floor plans and/or technical data set forth are approximations and are subject to further elaboration/confirmation.

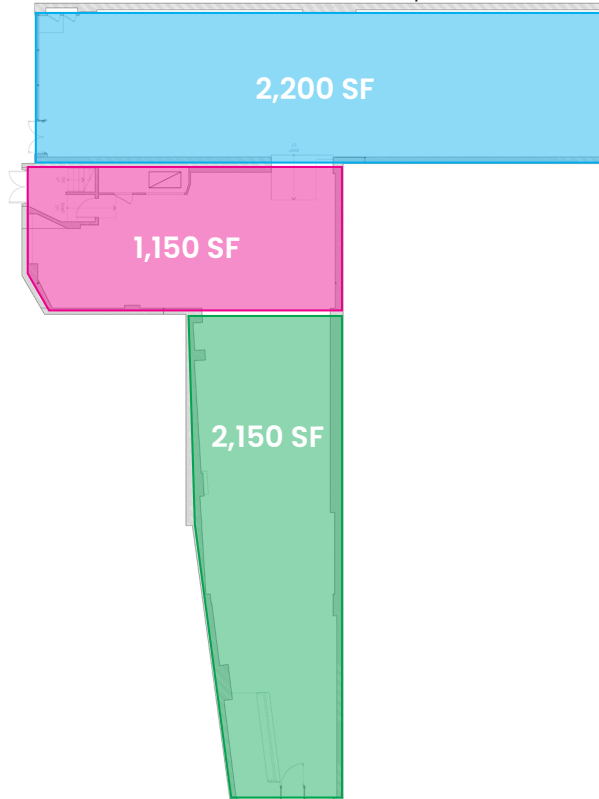
69 GRAHAM AVENUE

BETWEEN MOORE & SEIGEL STREETS | WILLIAMSBURG

Floor Plan - Ground Floor (current layout)

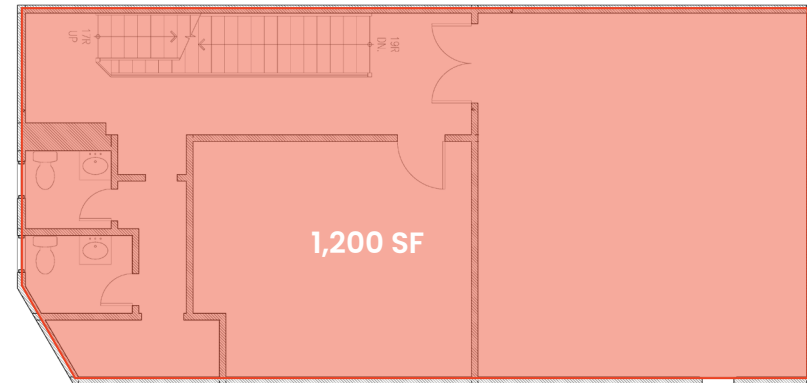


Floor Plan - Ground Floor (possible divisions)



Satellite View

Floor Plan - Mezzanine



CONTACT OUR BROKERS FOR MORE INFORMATION



All information supplied in this marketing presentation and/or flyer is from sources deemed reliable and is furnished subject to errors, omissions, modifications, removal of listings from sale/lease and to any listing condition. Any square footage, dimensions, floor plans and/or technical data set forth are approximations and are subject to further elaboration/confirmation.

SOLOMON TBEILE
STbeile@ksrny.com

917.215.5471

69 GRAHAM AVENUE

BETWEEN MOORE & SEIGEL STREETS | WILLIAMSBURG

Interiors: Ground Floor



Interiors: Second Floor



CONTACT OUR BROKERS FOR MORE INFORMATION



All information supplied in this marketing presentation and/or flyer is from sources deemed reliable and is furnished subject to errors, omissions, modifications, removal of listings from sale/lease and to any listing condition. Any square footage, dimensions, floor plans and/or technical data set forth are approximations and are subject to further elaboration/confirmation.

SOLOMON TBEILE
STbeile@ksrny.com

917.215.5471