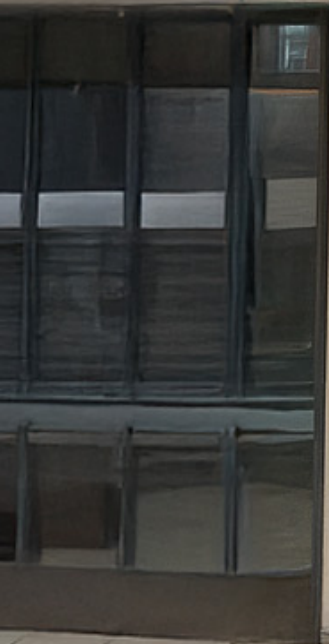


249 UTICA AVENUE

BETWEEN LINCOLN & ST JOHNS PLACE | CROWN HEIGHTS



249 UTICA AVENUE

BETWEEN LINCOLN & ST JOHNS PLACE | CROWN HEIGHTS

PROPERTY HIGHLIGHTS

- Located in the heart of Crown Heights
- High foot traffic area - surrounded by established businesses and close to local schools, medical offices, and residential buildings
- Great co-tenancy including:
Chipotle, CityMD, Tribeca Pediatrics, & more!

SIZE: 2,000 SF Ground Floor
1,000 SF Backyard
500 SF Basement

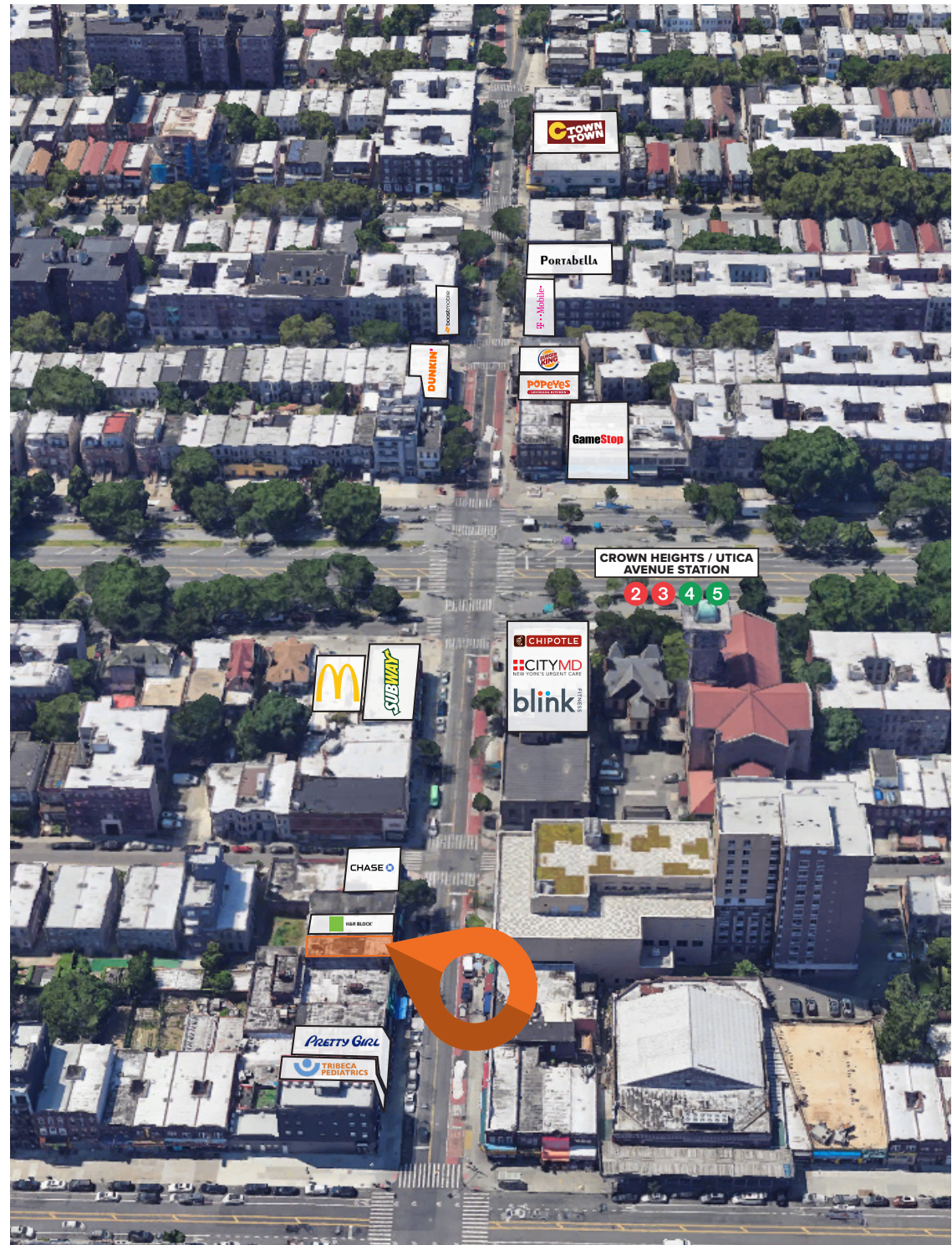
FRONTAGE: 25'

CEILING HEIGHT: 14'

POSSESSION: 30 Days

ASKING RENT: Upon Request

TRANSPORTATION: 2 3 4 5



All information supplied in this marketing presentation and/or flyer is from sources deemed reliable and is furnished subject to errors, omissions, modifications, removal of listings from sale/lease and to any listing condition. Any square footage, dimensions, floor plans and/or technical data set forth are approximations and are subject to further elaboration/confirmation.



249 UTICA AVENUE

BETWEEN LINCOLN & ST JOHNS PLACE | CROWN HEIGHTS

INTERIOR:



249 UTICA AVENUE

BETWEEN LINCOLN & ST JOHNS PLACE | CROWN HEIGHTS

FOR MORE INFORMATION,
PLEASE CONTACT:

CHARLES MARYLES

914.536.5436 | CMaryles@ksrny.com

NATHAN ABALLI

917.915.8763 | NAballi@ksrny.com

