

168-05 JAMAICA AVENUE

BETWEEN 168TH & 169TH STREETS | JAMAICA



168-05 JAMAICA AVENUE

BETWEEN 168TH & 169TH STREETS | JAMAICA

PROPERTY HIGHLIGHTS

- High foot traffic area
- Dense residential neighborhood
- Neighbors Include:
Marshalls, Taco Bell, Home Depot, Subway, Dunkin', European Wax Center, Carter's, Rainbow, Bank of America, & many more!

SIZE: 1,100 SF Ground Floor
+ Full Basement

FRONTAGE: 12'

CEILING HEIGHTS: 10'

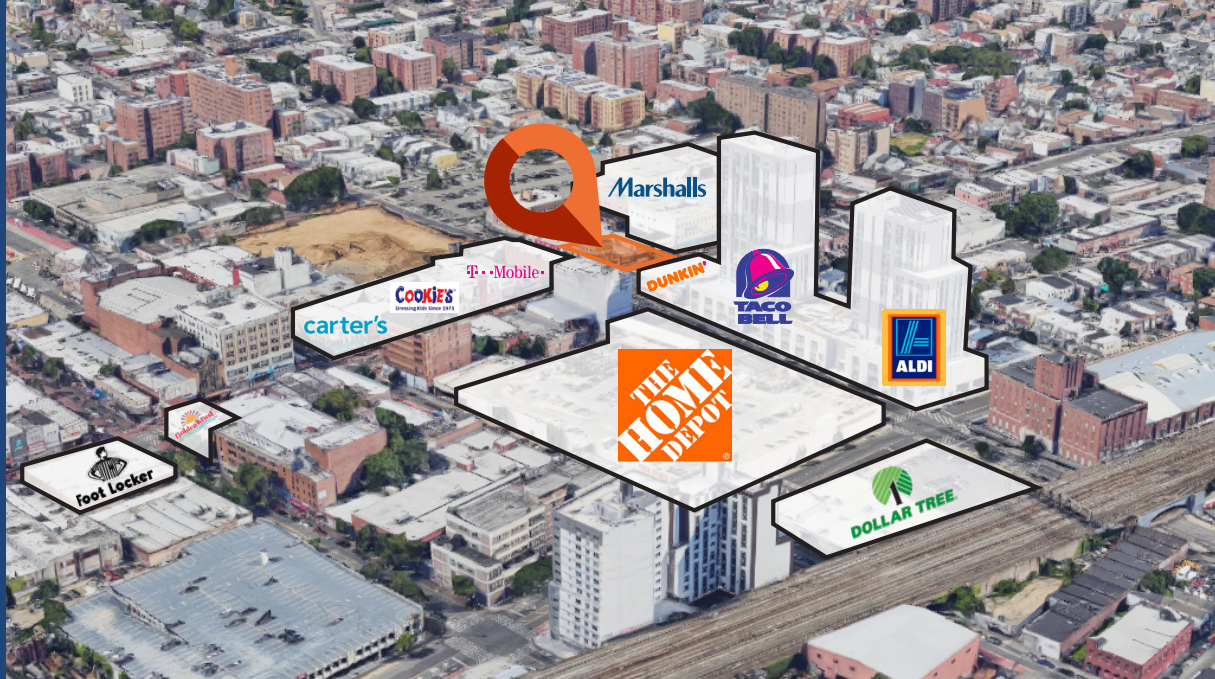
POSSESSION: Immediate

ASKING RENT: Upon Request

TRANSPORTATION:   New York City Bus



All information supplied in this marketing presentation and/or flyer is from sources deemed reliable and is furnished subject to errors, omissions, modifications, removal of listings from sale/lease and to any listing condition. Any square footage, dimensions, floor plans and/or technical data set forth are approximations and are subject to further elaboration/confirmation.



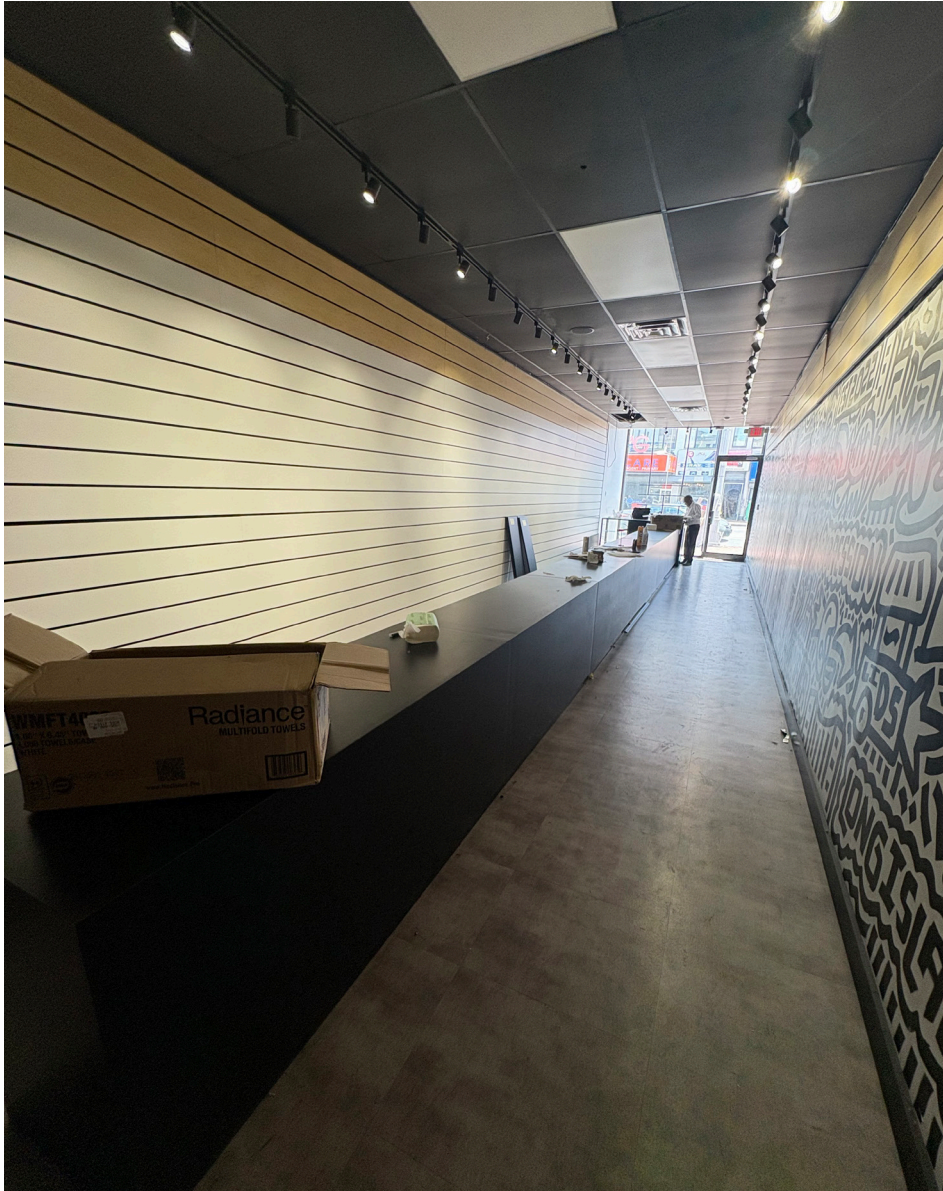
U.S. FDA

QUEENS HS FOR THE SCIENCES

168-05 JAMAICA AVENUE

BETWEEN 168TH & 169TH STREETS | JAMAICA

INTERIORS:



All information supplied in this marketing presentation and/or flyer is from sources deemed reliable and is furnished subject to errors, omissions, modifications, removal of listings from sale/lease and to any listing condition. Any square footage, dimensions, floor plans and/or technical data set forth are approximations and are subject to further elaboration/confirmation.

168-05 JAMAICA AVENUE

BETWEEN 168TH & 169TH STREETS | JAMAICA

FOR MORE INFORMATION,
PLEASE CONTACT:

CHARLIE MARYLES

914.536.5436 | CMaryles@ksrny.com

NATHAN ABALLI

917.915.8763 | NAballi@ksrny.com

