

89-61A

165TH STREET

BETWEEN JAMAICA & HILLSIDE AVENUES
JAMAICA | QUEENS

89-61

Yun Xiang
GIFT SHOP

89-61A



PLATI
NEW

89-63 165th Street

PEDICURE
MANICURE
EYELASHES



89-61A

165TH STREET

PROPERTY HIGHLIGHTS:

- All uses considered
- Move-in excellent condition
- Gas cooking available
- Located in the 165th street retail shopping corridor
- Heavy foot traffic
- Former gift shop
- Neighboring tenants include: *Rainbow, Carter's, Home Depot, Golden Krust, T-Mobile, Foot Locker, Portabella, Five Below, Gamestop, Blink Fitness, Primark, Target, Bank of America, & many more!*

SIZE: 1,000 SF Ground Floor
860 SF Basement

FRONTAGE: 15'

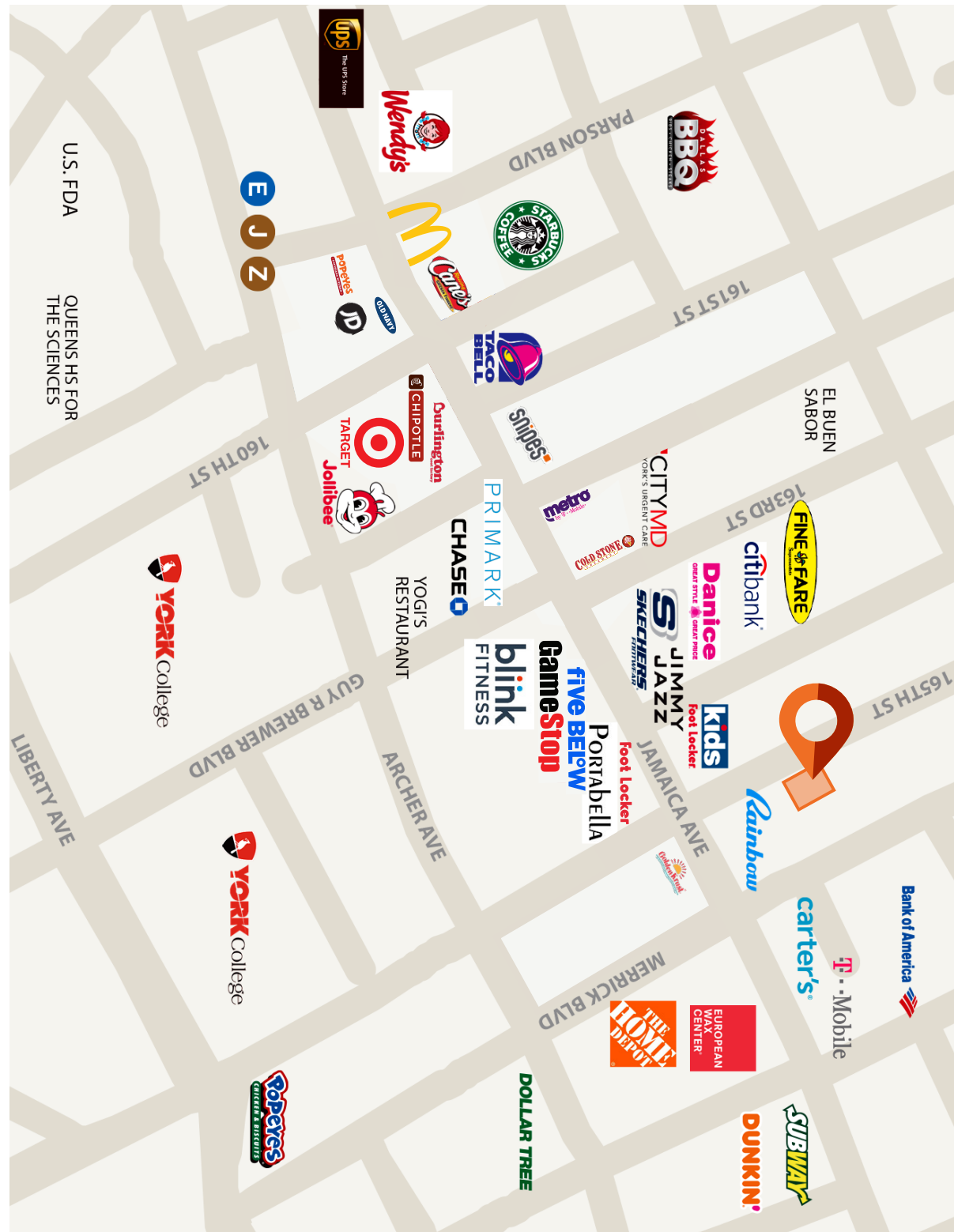
CEILING HEIGHT: 12'

POSSESSION: Immediate

TRANSPORTATION: **B D E F**



All information supplied in this marketing presentation and/or flyer is from sources deemed reliable and is furnished subject to errors, omissions, modifications, removal of listings from sale/lease and to any listing condition. Any square footage, dimensions, floor plans and/or technical data set forth are approximations and are subject to further elaboration/confirmation.

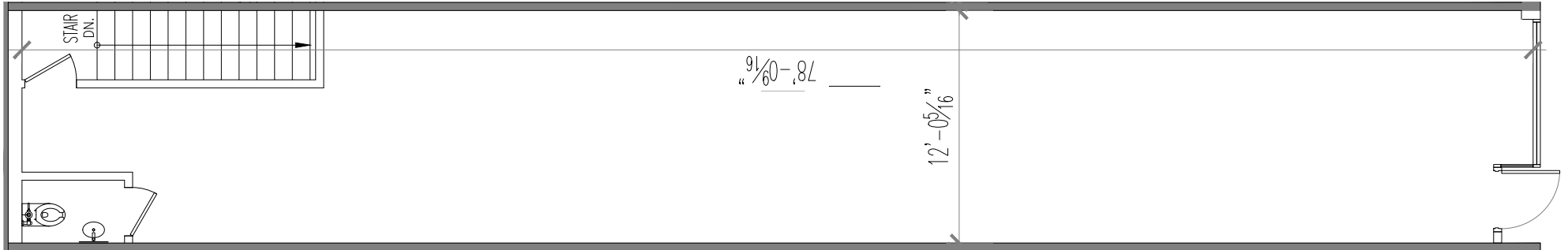


89-61A

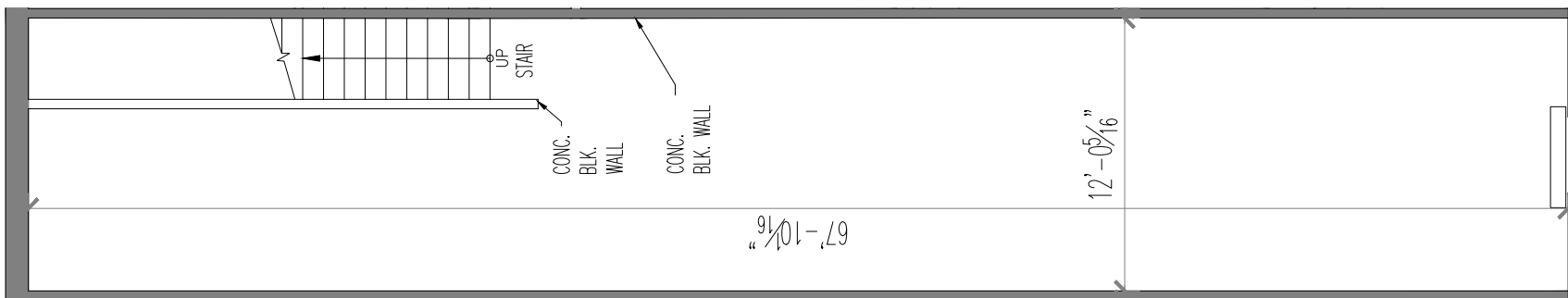
165TH STREET

FLOOR PLANS:

GROUND FLOOR - 1,000 SF



BASEMENT - 860 SF



89-61A

165TH STREET

BETWEEN JAMAICA & HILLSIDE AVENUES
JAMAICA | QUEENS

FOR MORE INFORMATION,
PLEASE CONTACT:

HUNTER LAZAN

772.559.5195 | HLazan@ksrny.com

JACK KHASKI

917.355.0559 | JackK@ksrny.com

