

356 SEVENTH AVENUE

BETWEEN 10TH & 11TH STREETS | PARK SLOPE



356 SEVENTH AVENUE

BETWEEN 10TH & 11TH STREETS | PARK SLOPE

PROPERTY DETAILS

SIZE: 1,025 SF Ground Floor
810 SF Lower Level
500 SF Backyard

FRONTAGE: 20'

CEILING HEIGHT: 10'

POSSESSION: 05/01/2026

ASKING RENT: Upon Request

TRANSPORTATION: **F G N R**

HIGHLIGHTS

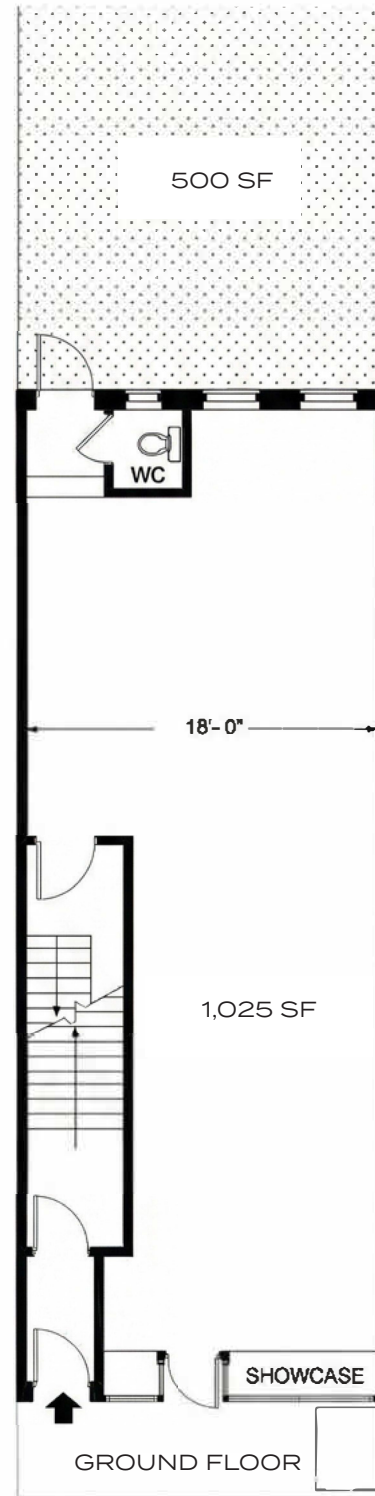
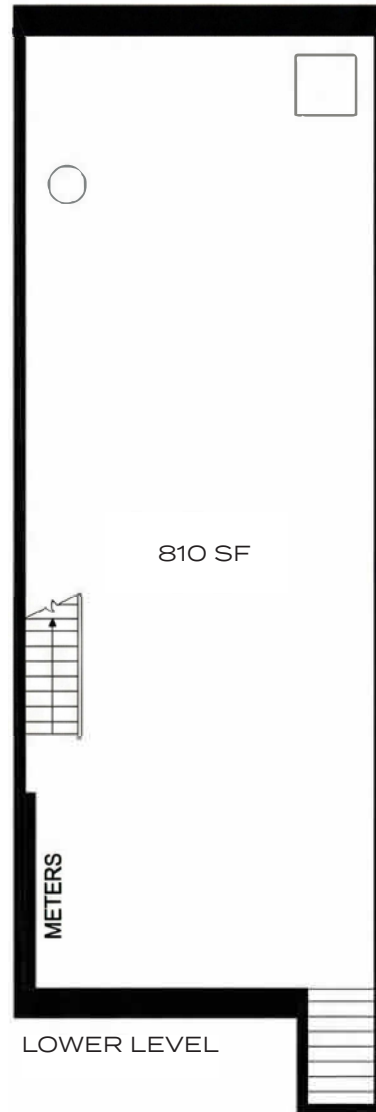
- All uses considered
- Prime Park Slope Corner
- Convenient access to public transportation
- Neighboring tenants include: *WINNER, Cafe Grumpy, Taim, Starbucks, Bank of America, Dave's Hot Chicken, Jersey Mike's, Dunkin', Brooklyn Game Lab, BakeStreet, NY Presbyterian hospital, YMCA, & many more!*



356 SEVENTH AVENUE

BETWEEN 10TH & 11TH STREETS | PARK SLOPE

FLOOR PLANS:



356 SEVENTH AVENUE

BETWEEN 10TH & 11TH STREETS | PARK SLOPE

FOR MORE INFORMATION,
PLEASE CONTACT:

SOLOMON TBEILE

917.215.5471 | STbeile@ksrny.com

IKE BIBI

347.417.2860 | IBibi@ksrny.com



1385 Broadway, 22nd Floor | New York, NY 10018
212.417.9217

ksrny.com