

452

FULTON STREET



CORNER OF HOYT STREET | DOWNTOWN BROOKLYN



UP TO 16,606 SF OF TOTAL SELLING SPACE

RENDERING

452 FULTON STREET

CORNER OF HOYT STREET | DOWNTOWN BROOKLYN

PROPERTY HIGHLIGHTS

- Best corner at Fulton mall – tremendous signage & visibility
- Perfect for any big box tenant
- All uses considered
- Each floor can be leased separately
- Four combined retail spaces on ground floor including former Modell's which includes up to 28,945 SF of total selling space
- Space includes escalators, elevators & freight
- Across the street from City Point, Camp, Primark, Spectrum, Rainbow, Foot Locker, H&M, Express, Jimmy Jazz, Macy's
- Ownership to deliver space in Jewel Box condition

SIZE

Ground Floor	1,606 SF
2nd Floor	15,000 SF
Total:	16,606 SF

CEILINGS

13 Feet

FRONTAGE

150' Wraparound

POSSESSION

Immediate

ASKING RENT

Upon Request

TRANSPORTATION



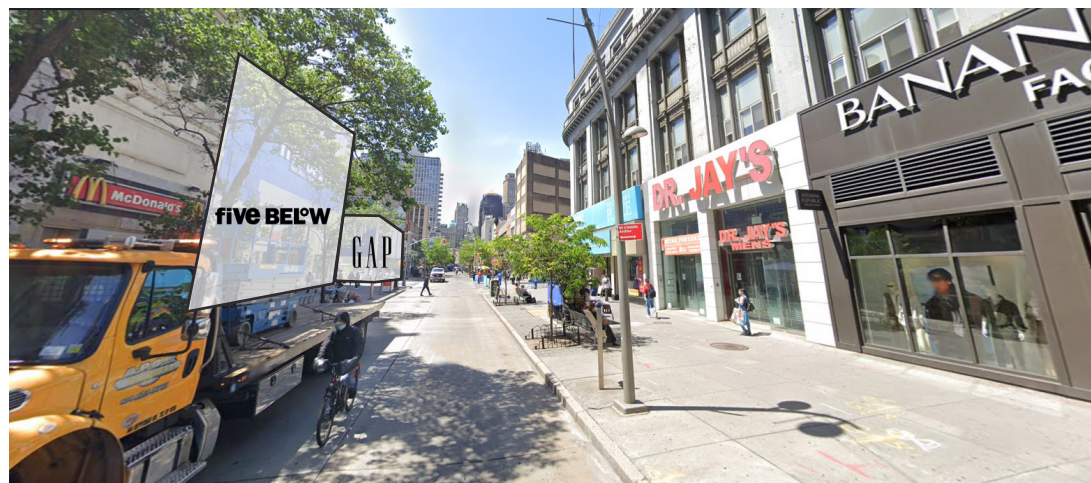
CONTACT OUR BROKERS FOR MORE INFORMATION

SOLOMON SHARABY
SSharaby@ksrny.com
718.986.7149

ALBERT MANOPLA
AManopla@ksrny.com
212.380.8369

NATHAN ABALLI
NAballi@ksrny.com
917.915.8763

JACK KHASKI
JackK@ksrny.com
917.355.0559

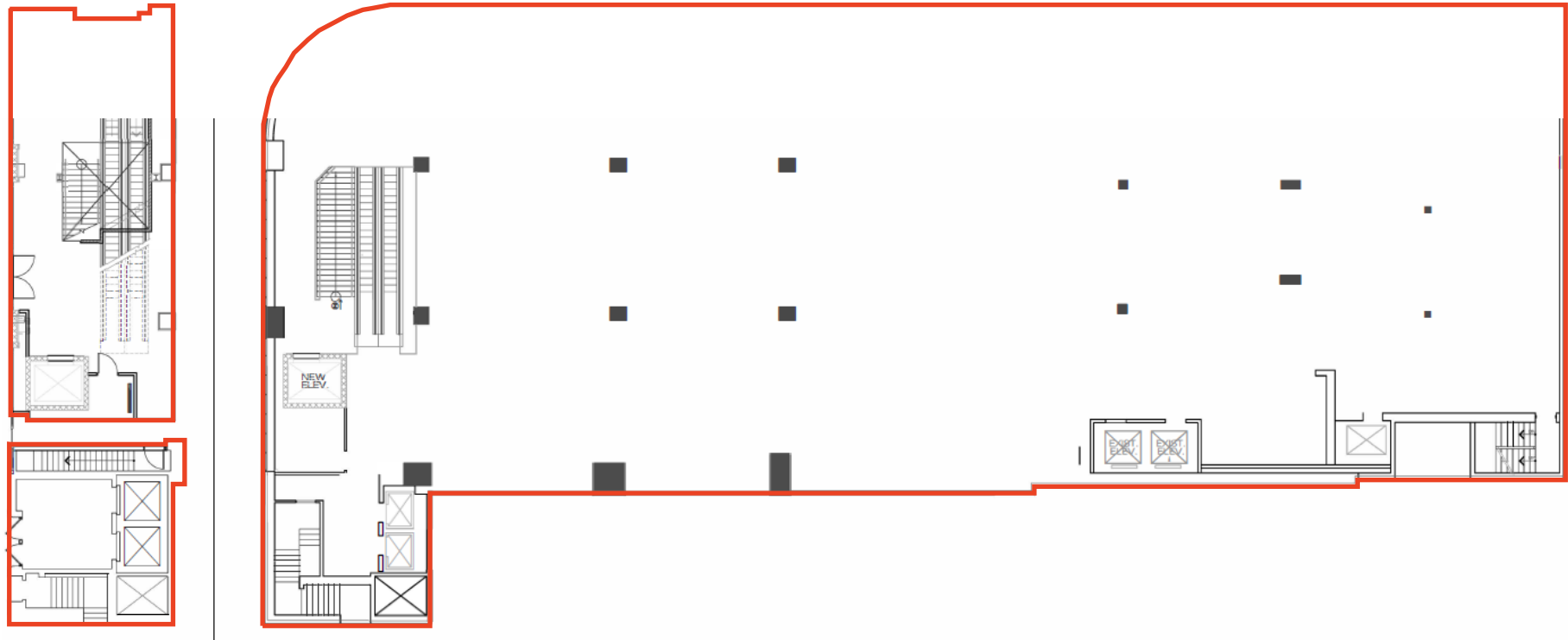


All information supplied in this marketing presentation and/or flyer is from sources deemed reliable and is furnished subject to errors, omissions, modifications, removal of listings from sale/lease and to any listing condition. Any square footage, dimensions, floor plans and/or technical data set forth are approximations and are subject to further elaboration/confirmation.

452 FULTON STREET



CORNER OF HOYT STREET | DOWNTOWN BROOKLYN



First Floor
1,606 SF

Second Floor
15,000 SF

Third Floor
Can be made available
5,500 SF

CONTACT OUR BROKERS FOR MORE INFORMATION

All information supplied in this marketing presentation and/or flyer is from sources deemed reliable and is furnished subject to errors, omissions, modifications, removal of listings from sale/lease and to any listing condition. Any square footage, dimensions, floor plans and/or technical data set forth are approximations and are subject to further elaboration/confirmation.

ALBERT MANOPLA
AManopla@ksrny.com

212.380.8369

JACK KHASKI
Jackk@ksrny.com

917.355.0559

NATHAN ABALLI
NAballi@ksrny.com

917.915.8763

SOLOMON SHARABY
SSharaby@ksrny.com

718.986.7149