

# 25

WEST 36TH STREET

BETWEEN 5TH & 6TH AVENUES

MIDTOWN WEST



# 25

## WEST 36TH STREET BETWEEN 5TH & 6TH AVENUES MIDTOWN WEST

SIZE: ~3,400 SF Ground Floor  
902 SF Mezzanine  
1,924 SF Basement

FRONTAGE: 15'

CEILING HEIGHT: ~18'

POSSESSION: ASAP

ASKING RENT: Upon Request

TRANSPORTATION: **B D F M N Q R W**

### HIGHLIGHTS:

- High foot traffic area
- Excellent national co-tenancy
- Steps away from Herald Square
- Neighboring tenants include: *Oakberry, TESO, Krispy Kreme, Macy's, Zara, Aldo, Superdry, Zumiez, Rainbow, McDonald's, Le Pain Quotidien, CVS, Sushi & Co., Paris Baguette, Bravo Pizza & more!*

### CONTACT OUR BROKERS FOR MORE INFORMATION:

**CAROLINA AZIZ**  
CAziz@ksrny.com  
516.640.6961

**IKE BIBI**  
IBibi@ksrny.com  
347.417.2860

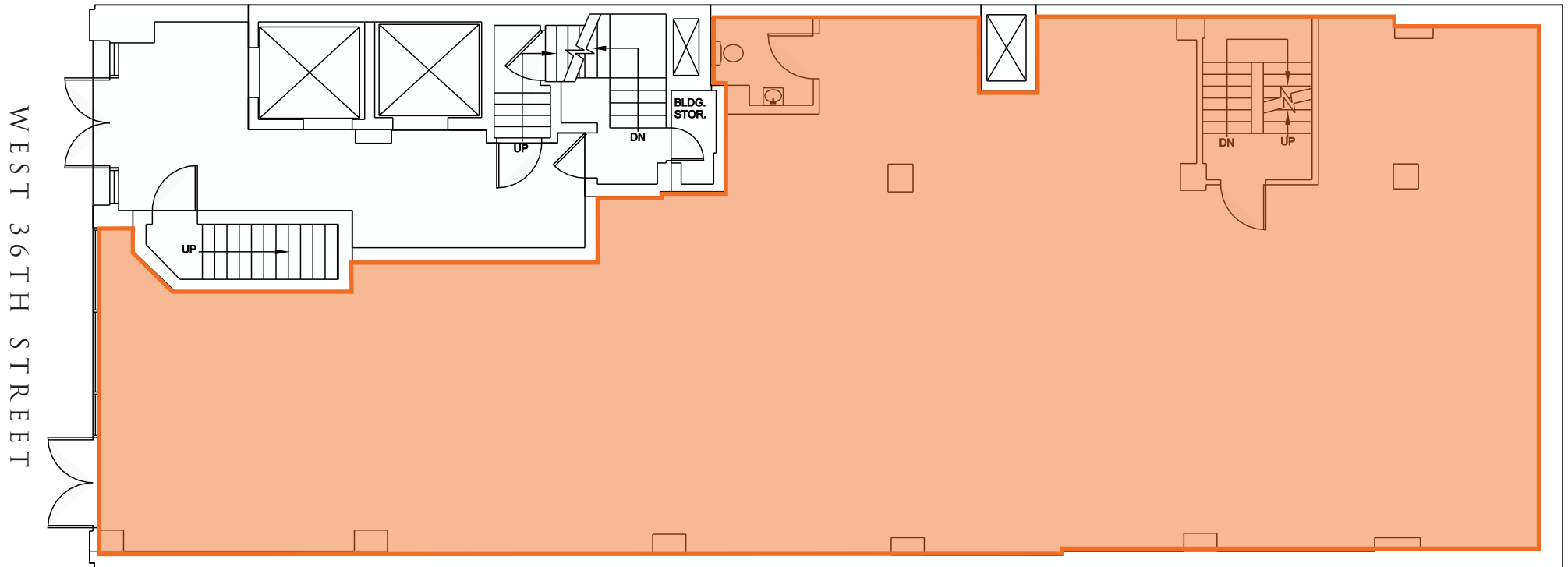
**MICHAEL BIJOU**  
MBijou@ksrny.com  
646.648.0248



# 25

WEST 36TH STREET

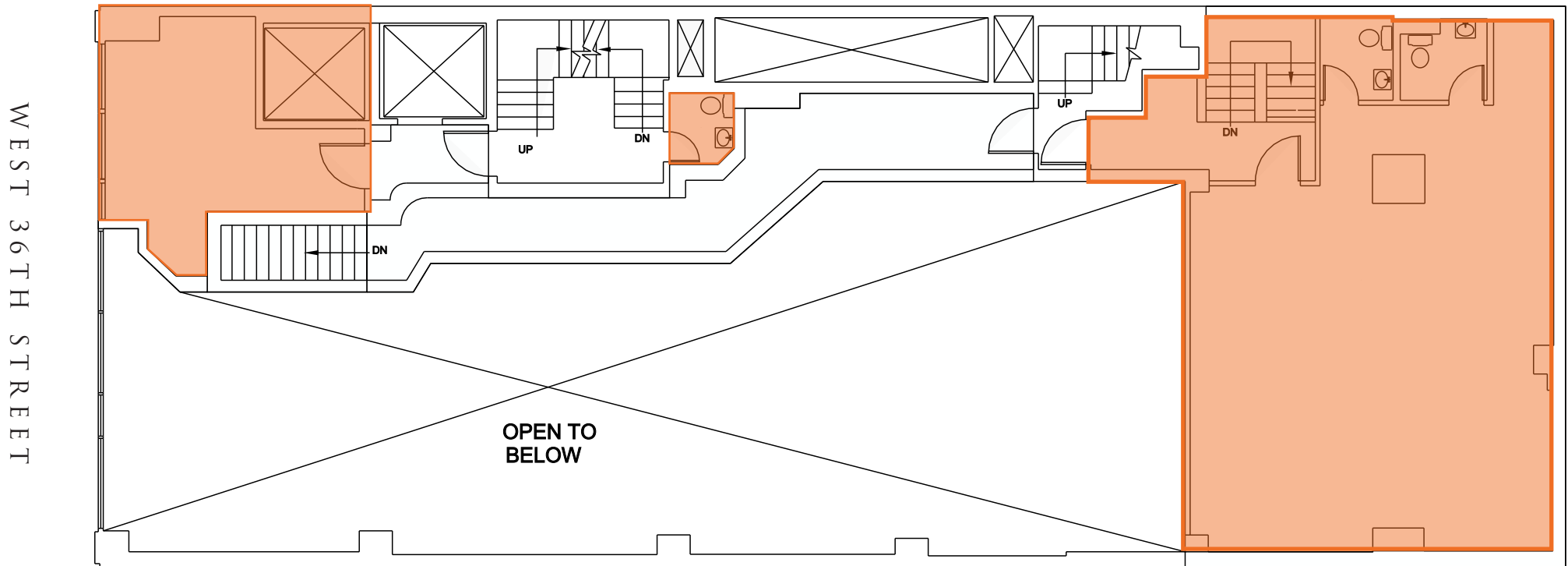
FLOOR PLAN:  
GROUND FLOOR - ~3,400 SF



# 25

WEST 36TH STREET

FLOOR PLAN:  
MEZZANINE - 902 SF



# 25

WEST 36TH STREET

FLOOR PLAN:  
BASEMENT - 1,924 SF

