

# 258 EAST 138TH STREET

BETWEEN 3RD & RYDER AVENUES | MOTT HAVEN

YOUR BRAND

1000  
SF  
for Lease

**B** BRONX BEAUTY

256 E 138TH

COSMETICS, WKS, ACCESSORIES AND MORE

1

# 258 EAST 138TH STREET

BETWEEN 3RD & RYDER AVENUES | MOTT HAVEN

## PROPERTY DETAILS

SIZE: 1,000 SF Ground Floor

FRONTAGE: 17'

CEILING HEIGHT: 12'

POSSESSION: Arranged

TRANSPORTATION: 2 4 5 6

## HIGHLIGHTS

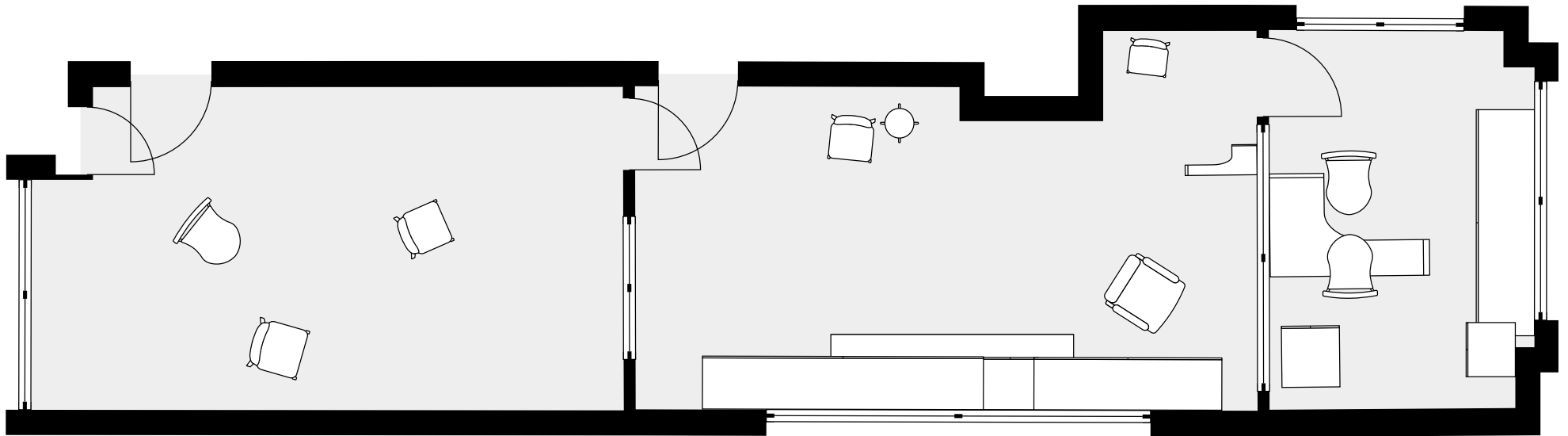
- All uses considered
- Newly renovated storefront/vanilla box
- Situated in a dynamic, growing neighborhood with a blend of old and new, appealing to diverse demographics
- Consistent high foot traffic from nearby transit and residential developments
- High residential density with nearby offices, bringing steady commuter traffic
- Neighboring tenants: *Popeyes, Shell, Volks Wagon, Dollar Tree, Wyndham Garden, Comfort Inn, Western Beef, Clean Rite, Cubesmart Self Storage, The Arches, & More!*



# 258 EAST 138<sup>TH</sup> STREET

BETWEEN 3RD & RYDER AVENUES | MOTT HAVEN

FLOOR PLANS:  
1,000 SF GROUND FLOOR



All information supplied in this marketing presentation and/or flyer is from sources deemed reliable and is furnished subject to errors, omissions, modifications, removal of listings from sale/lease and to any listing condition. Any square footage, dimensions, floor plans and/or technical data set forth are approximations and are subject to further elaboration/confirmation.

# 258 EAST 138TH STREET

BETWEEN 3RD & RYDER AVENUES | MOTT HAVEN

CONCEPTUAL INTERIOR RENDERS:



All information supplied in this marketing presentation and/or flyer is from sources deemed reliable and is furnished subject to errors, omissions, modifications, removal of listings from sale/lease and to any listing condition. Any square footage, dimensions, floor plans and/or technical data set forth are approximations and are subject to further elaboration/confirmation.

# 258 EAST 138<sup>TH</sup> STREET

BETWEEN 3<sup>RD</sup> & RYDER AVENUES | MOTT HAVEN

FOR MORE INFORMATION,  
PLEASE CONTACT:

**SOLOMON SHARABY**

718.986.7149 | [SSharaby@ksrny.com](mailto:SSharaby@ksrny.com)

