

1926 CROTONA AVENUE

BETWEEN SOUTHERN BLVD & ELSMERE PLACE | CROTONA / THE BRONX

MEDICAL COMMUNITY FACILITY AVAILABLE FOR LEASE

1926 CROTONA AVENUE

BETWEEN SOUTHERN BLVD & ELSMERE PLACE | CROTONA / THE BRONX

PROPERTY HIGHLIGHTS

- Former medical space
- Mechanicals & plumbing in place
- Dense Residential Area
- Steps away from the Bronx Zoo, NY Botanical Gardens, & Crotona Park
- Easily accessible via Cross Bronx Expressway
- Neighbors include:
McDonald's, Dunkin', Chase, Blink Fitness, Domino's Pizza, Saint Thomas Aquinas church, Family Dollar, Boost Mobile, Stop & Shop, Western Beef, Optimum, C Town Supermarket, Gamestop, Burger King, Autozone, T.J. Maxx, Montefiore Medical Center, Boost Mobile, Taco Bell, IHOP

SIZE: 4,000 SF Ground Floor

FRONTAGE: 50' wraparound

CEILING HEIGHT: 14'

POSSESSION: Arranged

ASKING RENT: Upon Request

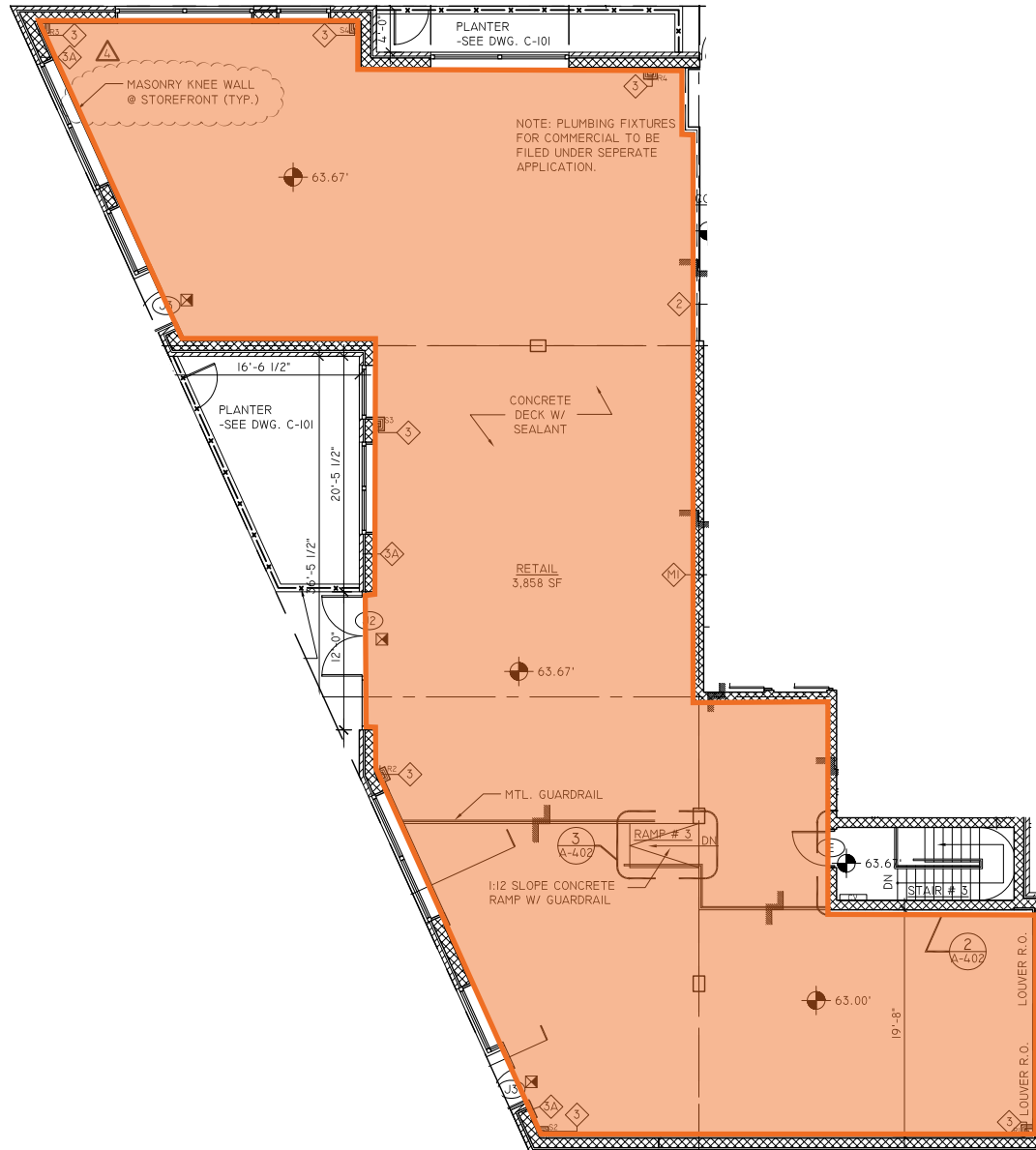
TRANSPORTATION: 



1926 CROTONA AVENUE

BETWEEN SOUTHERN BLVD & ELSMERE PLACE | CROTONA / THE BRONX

FLOOR PLANS:
GROUND FLOOR - 4,000 SF



1926 CROTONA AVENUE

BETWEEN SOUTHERN BLVD & ELSMERE PLACE | CROTONA / THE BRONX

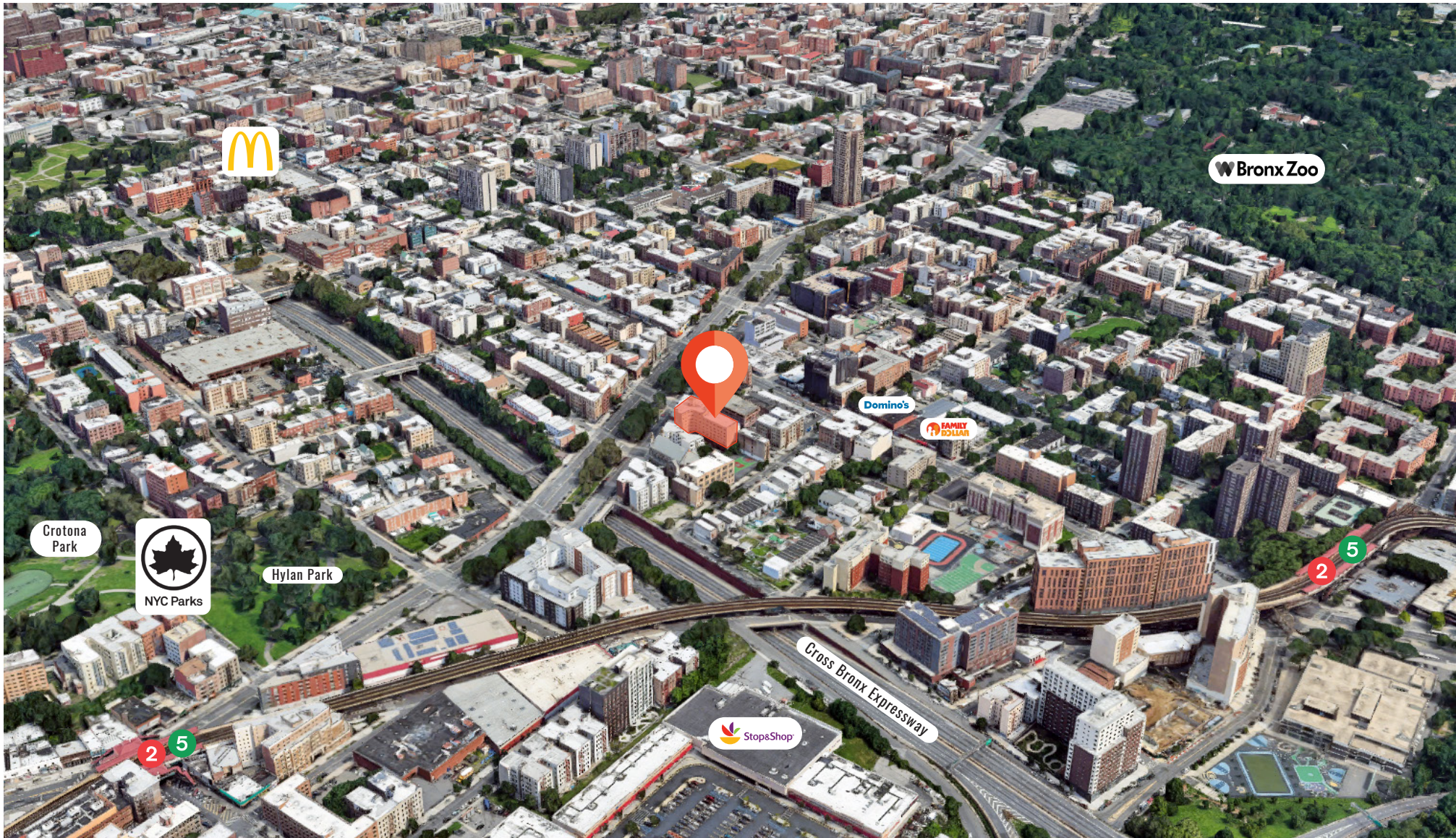
INTERIORS:



1926 CROTONA AVENUE

BETWEEN SOUTHERN BLVD & ELSMERE PLACE | CROTONA / THE BRONX

AREA MAP:



1926 CROTONA AVENUE

BETWEEN SOUTHERN BLVD & ELSMERE PLACE | CROTONA / THE BRONX

FOR MORE INFORMATION,
PLEASE CONTACT:

EZRA FALACK

917.518.3568 | EFalack@ksrny.com

SOLOMON SHARABY

718.986.7149 | SSharaby@ksrny.com

