

37-16 UNION STREET

BETWEEN 37TH & 39TH AVENUES | FLUSHING



37-16 UNION STREET

BETWEEN 37TH & 39TH AVENUES | FLUSHING

PROPERTY HIGHLIGHTS

- Parking garage with over 100 spaces
- At the base of 80,000 SF+ office tower
- Rare opportunity to secure on site parking in the heart of Downtown Flushing
- Neighboring tenants include:
Starbucks, McDonald's, Dunkin', Chipotle, Shake Shack, CVS Pharmacy, Walgreens, Target, Uniqlo, Nike, Adidas, Sephora, Muji, BJ's Wholesale Club, Marshalls, AMC Theatres, SkyView Center, New World Mall, Tangram, Queens Crossing, & many more!

SIZE: 4,539 SF Ground Floor

FRONTAGE: 55'

POSSESSION: Immediate

ASKING RENT: Upon Request

TRANSPORTATION:  Long Island Rail Road

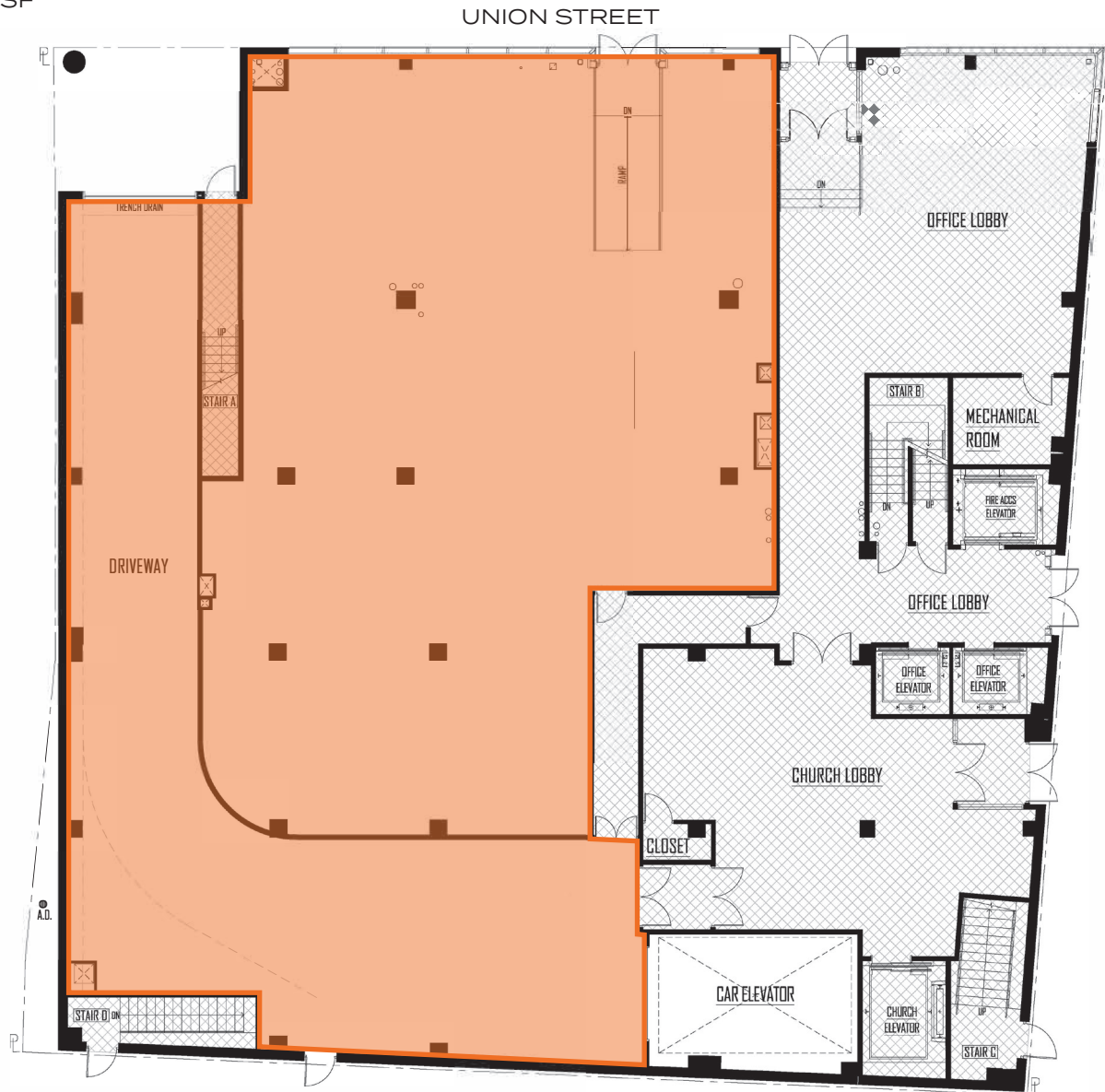


All information supplied in this marketing presentation and/or flyer is from sources deemed reliable and is furnished subject to errors, omissions, modifications, removal of listings from sale/lease and to any listing condition. Any square footage, dimensions, floor plans and/or technical data set forth are approximations and are subject to further elaboration/confirmation.

37-16 UNION STREET

BETWEEN 37TH & 39TH AVENUES | FLUSHING

FLOOR PLANS:
GROUND FLOOR - 4,539 SF



All information supplied in this marketing presentation and/or flyer is from sources deemed reliable and is furnished subject to errors, omissions, modifications, removal of listings from sale/lease and to any listing condition. Any square footage, dimensions, floor plans and/or technical data set forth are approximations and are subject to further elaboration/confirmation.

37-16 UNION STREET

BETWEEN 37TH & 39TH AVENUES | FLUSHING

FOR MORE INFORMATION,
PLEASE CONTACT:

MARK GALLUCCI

718.551.5387 | MGallucci@ksrny.com

GEORGE SKALIARINIS

347.844.0183 | GSkaliarinis@ksrny.com

