

162-24 JAMAICA AVENUE

OFF CORNER OF GUY R BREWER BLVD | JAMAICA | QUEENS



SPACE B

LEASED

DIVISIONS POSSIBLE

NEXT DOOR TO PRIMARK®

162-24 JAMAICA AVENUE

OFF CORNER OF GUY R BREWER BLVD | JAMAICA | QUEENS

PROPERTY HIGHLIGHTS

- Entrance is on side street (not on Jamaica Ave)
- Great window visibility on Jamaica Avenue
- Elevator access
- Major corner retail presence with heavy foot traffic
- Close proximity to many national retailers



SPACE A: **LEASED** 4,150 SF Ground Floor

SPACE B: 6,000 SF Mezzanine

FRONTAGE: 50'

CEILING HEIGHT: 9'

POSSESSION: Immediate

TRANSPORTATION: Long Island Rail Road

NEIGHBORS:



CONTACT OUR BROKERS FOR MORE INFORMATION

SOLOMON SHARABY
SSharaby@ksrny.com
718.986.7149

DAVID SABBAGH
DSabbagh@ksrny.com
646.784.7735

EZRA FALACK
EFalack@ksrny.com
917.518.3568

STEPHAN FISHER
SFisher@ksrny.com
917.923.0667

All information supplied in this marketing presentation and/or flyer is from sources deemed reliable and is furnished subject to errors, omissions, modifications, removal of listings from sale/lease and to any listing condition. Any square footage, dimensions, floor plans and/or technical data set forth are approximations and are subject to further elaboration/confirmation.

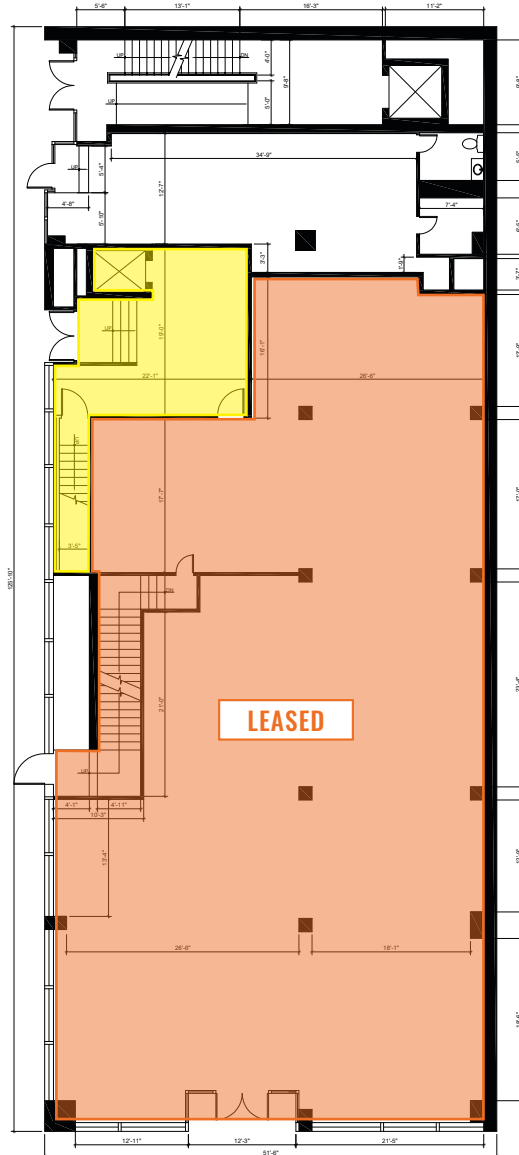


162-24 JAMAICA AVENUE

OFF CORNER OF GUY R BREWER BLVD | JAMAICA | QUEENS

FLOOR PLANS:

4,150 SF GROUND FLOOR



6,000 SF MEZZANINE

