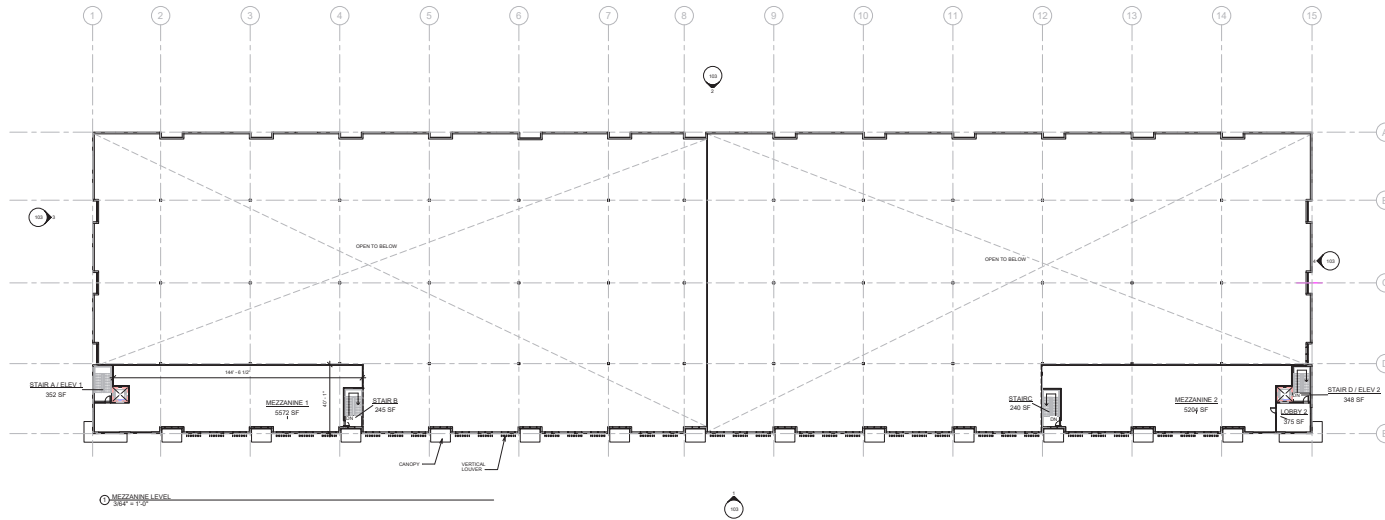


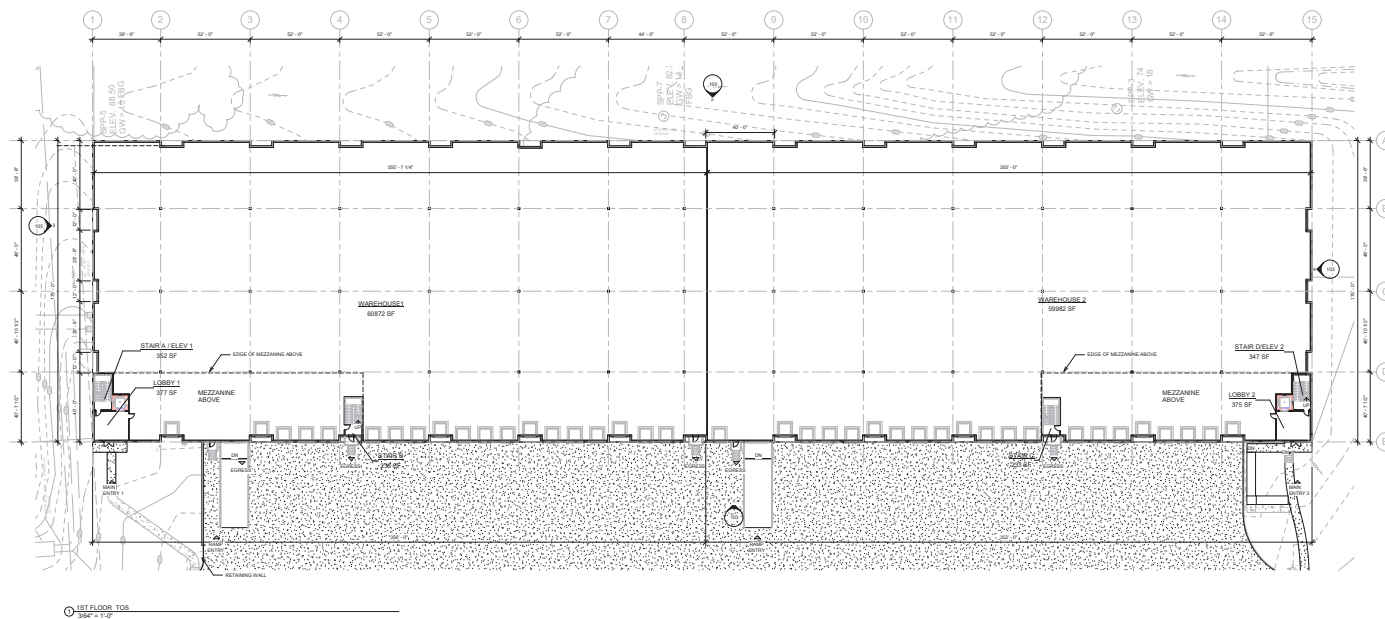
The proposed access road running **through the site** from Adelpia Road to Squankum Yellowbrook Road – incredibly rare to have ingress and egress from multiple streets.





MEZZANINE LEVEL	
Name	Area
LOBBY 2	375 SF
MEZZANINE 1	5572 SF
MEZZANINE 2	5204 SF
STAIR A / ELEV 1	352 SF
STAIR B	245 SF
STAIR D / ELEV 2	348 SF
STAIR C	240 SF
Grand total: 7	12336 SF

MEZZANINE FLOOR



1ST FLOOR AREAS	
Name	Area
LOBBY 1	377 SF
LOBBY 2	375 SF
STAIR A / ELEV 1	352 SF
STAIR B	238 SF
STAIR C	233 SF
STAIR D/ELEV 2	347 SF
WAREHOUSE 1	60872 SF
WAREHOUSE 2	59982 SF
Grand total: 8	122775 SF

FIRST FLOOR PLAN