

807

MANHATTAN AVE

CORNER OF CALYER STREET
GREENPOINT, BROOKLYN





807

MANHATTAN
AVENUE

JTRE 

KSR

807

MANHATTAN AVENUE
CORNER OF CALYER STREET | GREENPOINT

SIZE: 8,720 SF Ground Floor
2,500 SF Lower Level

FRONTAGE: 100' wraparound

CEILING HEIGHT: 12' - 40'

ASKING RENT: Upon Request

POSSESSION: Immediate

TRANSPORTATION: 

HIGHLIGHTS:

- Close proximity to subway lines with over 6M annual riders
- High foot traffic area in dense residential neighborhood
- Neighbors include: *City MD, Apple Bank, Chase, Rite Aid, Associated Supermarket, YMCA, Mattress Firm, Gong Cha, TD Bank, Walgreens, Santander, Davey's Ice Cream, Crunch Fitness, Awoke Vintage, Vivi Bubble Tea, Vital, Fornino, Oxomoco, Brooklyn Brewery, Bank of America*

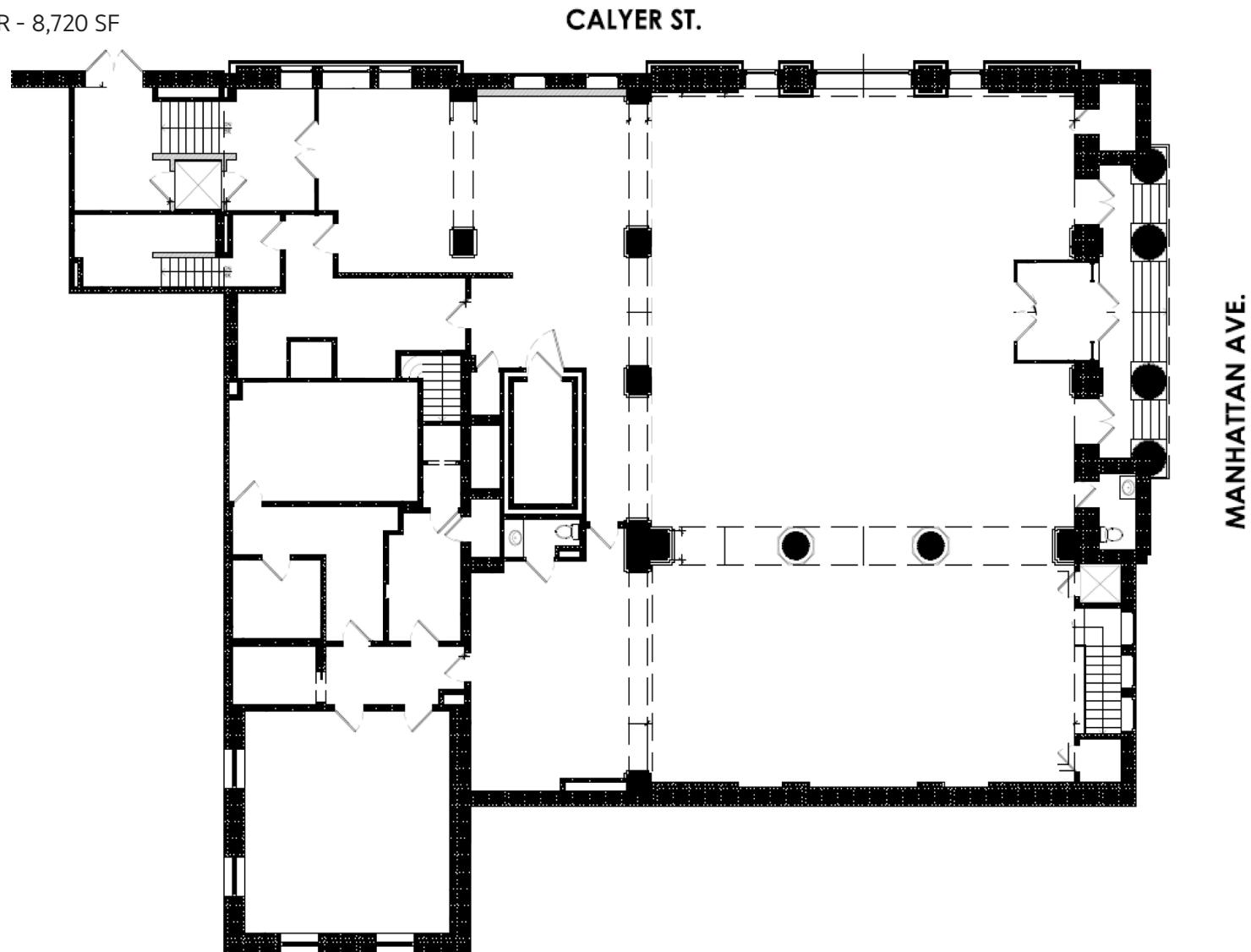


807

MANHATTAN AVENUE
CORNER OF CALYER STREET | GREENPOINT

FLOOR PLANS:

GROUND FLOOR - 8,720 SF



807

MANHATTAN AVENUE
CORNER OF CALYER STREET | GREENPOINT

INTERIORS:



807

MANHATTAN AVE

FOR MORE INFORMATION,
PLEASE CONTACT:

ALBERT SALAMEH

646.944.0797 | ASalameh@ksrny.com

DAVID GREEN

516.320.0260 | DDGreen@ksrny.com

