

501 BUSHWICK AVENUE

BETWEEN MONTEITH & FORREST STREETS | BUSHWICK



SPACE A

SPACE D

SPACE B

SPACE C

501 BUSHWICK AVENUE

BETWEEN MONTEITH & FORREST STREETS | BUSHWICK

PROPERTY DETAILS

SPACE A:	3,818 SF Ground Floor
SPACE B:	1,182 SF Ground Floor
SPACE C:	1,277 SF Ground Floor
SPACE D:	391 SF Ground Floor 6,952 SF Lower Level
FRONTAGE:	A: 51' B: 30' C: 32'
CEILING HEIGHT:	10'-20'
POSSESSION:	Immediate
ASKING RENT:	Upon Request
TRANSPORTATION:	J M Z

HIGHLIGHTS

- High foot traffic area
- Dense residential neighborhood
- Neighboring tenants: *Super 8, Roberta's, SYE, Puregym, Little Caesars, VIM, Netflix Studio, Foodtown, IHop, Starbucks, Ichiban, & more!*



BUSHWICK
HOUSES
1,220 UNITS

501
BUSHWICK AVE

VIM

Little
Caesars
Pizza

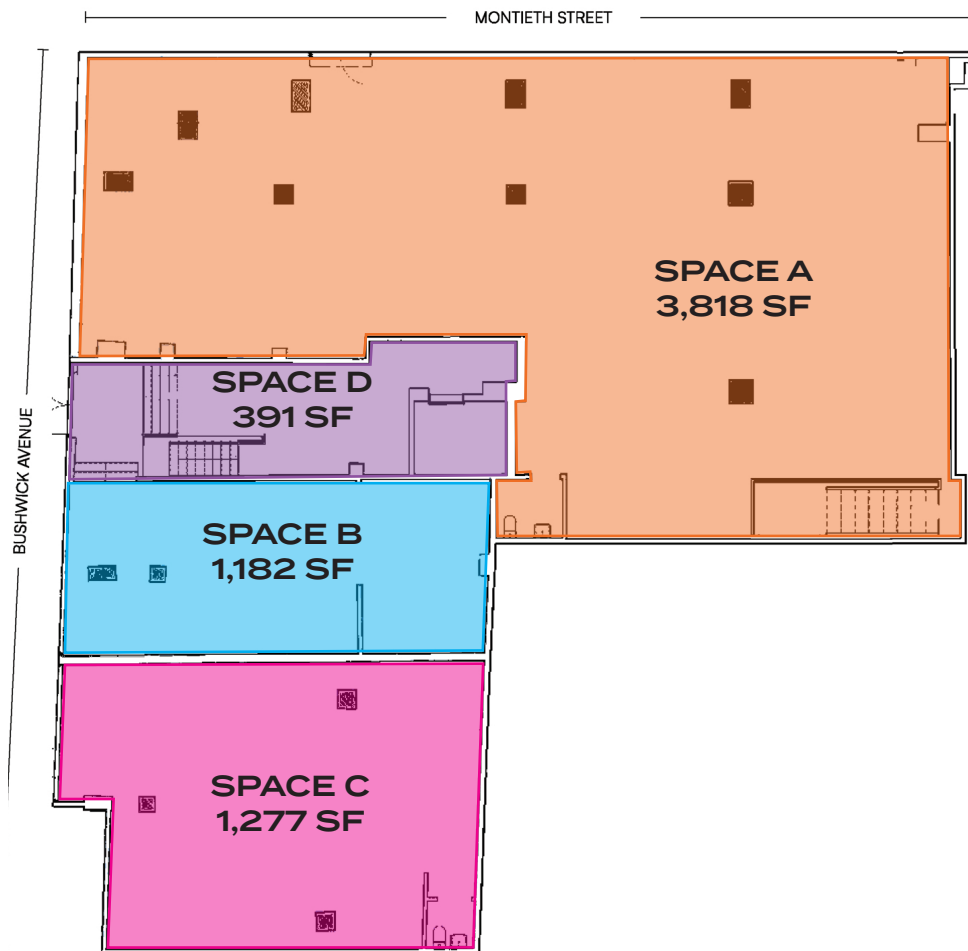
SUMMER
HOUSES
1,088 UNITS

MYRTLE
AVENUE
J M Z
2,788,090
RIDERS ANNUALLY

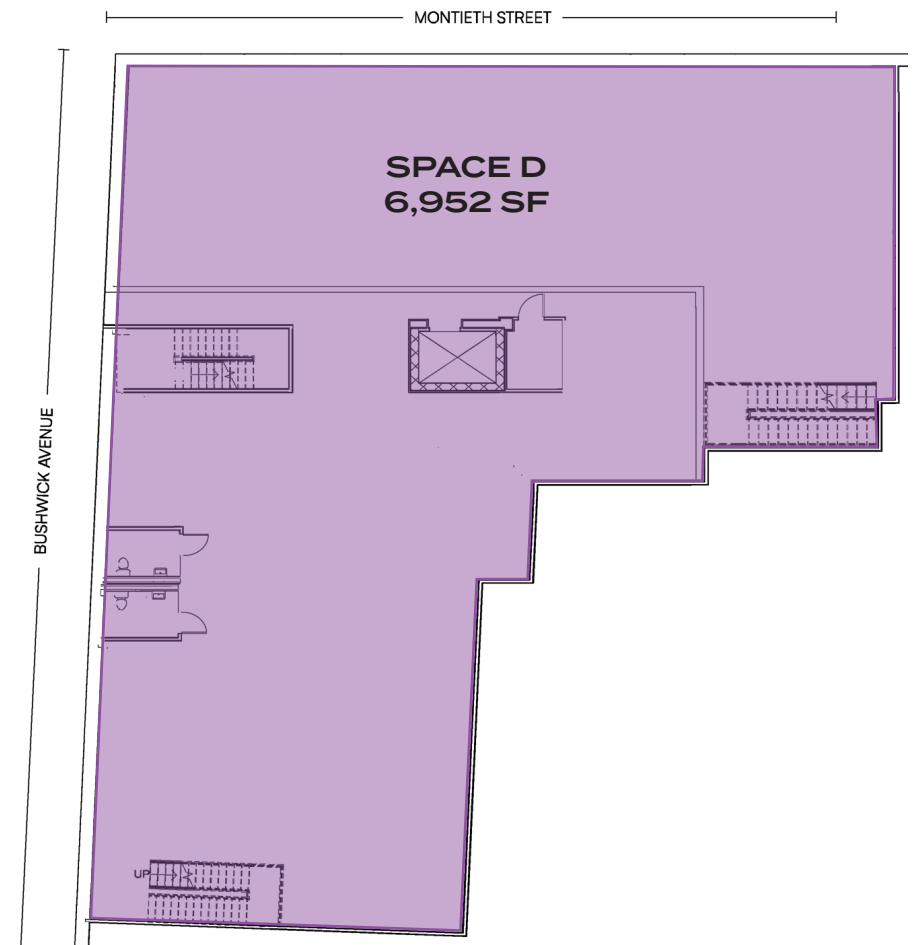
501 BUSHWICK AVENUE

BETWEEN MONTEITH & FORREST STREETS | BUSHWICK

FLOOR PLANS: GROUND FLOOR



LOWER LEVEL



501 BUSHWICK AVENUE

BETWEEN MONTEITH & FORREST STREETS | BUSHWICK

FOR MORE INFORMATION,
PLEASE CONTACT:

JORDAN SOLEIMANI

516.732.3697 | JSoleimani@ksrny.com

ELI YADID

917.770.9173 | EYadid@ksrny.com



1385 Broadway, 22nd Floor | New York, NY 10018
212.417.9217

ksrny.com