

# 23

## WEST 43RD STREET

BETWEEN FIFTH & SIXTH AVENUES



## PROPERTY HIGHLIGHTS

### Size:

Ground Floor: 6,103 SF

Lower Level: 4,980 SF

### Footage:

66 FT

### Ceiling Height:

18 FT Ground Floor

13 FT Lower Level

### Possession:

Arranged

### Asking Price:

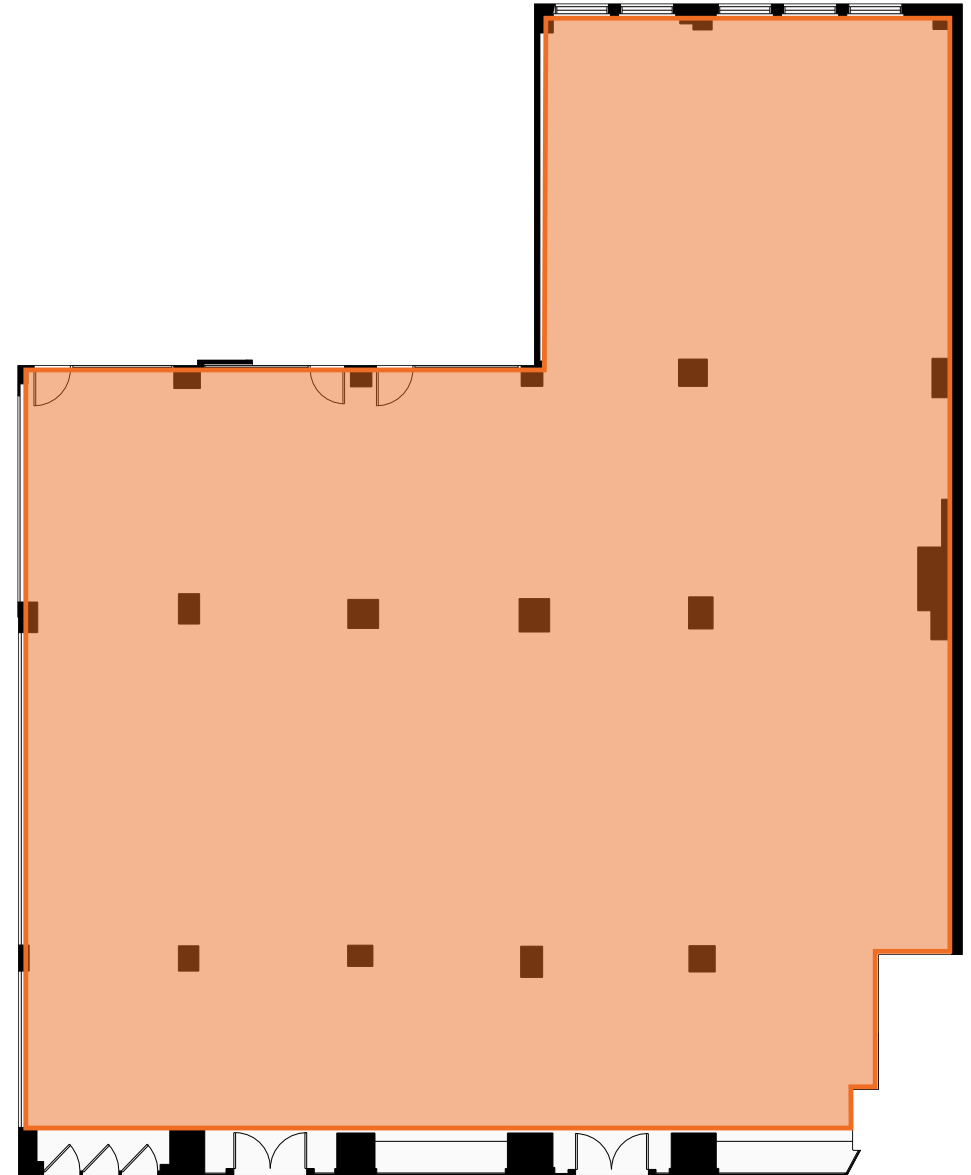
Upon Request

### Comments:

- Rare, large-format bi-level footprint in the heart of Midtown Manhattan
- Located next to the newly completed 520 Fifth Ave Mixed Use Boutique Skyscraper
- Immediate proximity to the Bryant Park and Times Square trade areas
- Lower Level is legally zoned for fitness; formerly operating as a gym
- Soaring ceiling heights on both the ground and lower levels
- Brand new 20-ton AC unit feeding the ground floor

### Neighbors:

STK · FedEx · Bluestone Lane · Moss Club · Cornell Club



23 WEST 43RD STREET | BETWEEN FIFTH & SIXTH AVENUES



All information supplied in this marketing presentation and/or flyer is from sources deemed reliable and is furnished subject to errors, omissions, modifications, removal of listings from sale/lease and to any listing condition. Any square footage, dimensions, floor plans and/or technical data set forth are approximations and are subject to further elaboration/confirmation.

23  
WEST 43RD STREET  
BETWEEN FIFTH & SIXTH AVENUES

FOR MORE INFORMATION,  
PLEASE CONTACT EXCLUSIVE AGENTS:

DOREL MELLOUL  
DMelloul@ksrny.com  
347.922.4563

MARC SITT  
Msitt@ksrny.com  
646.869.5528

