

362

WEST 125th STREET

BETWEEN ST NICHOLAS & MORNINGSIDE AVENUES
HARLEM



CONCEPTUAL RENDERING

362 WEST 125th STREET

BETWEEN ST NICHOLAS & MORNINGSIDE AVENUES
HARLEM

PROPERTY HIGHLIGHTS:

- All uses Considered
- Retail preferred
- High foot traffic, retail heavy location on the busiest block in Harlem
- Close proximity to subway train stations



SIZE: 2,035 SF Ground Floor

FRONTAGE: 33'

CEILING HEIGHT: 15' Ground Floor

POSSESSION: Immediate

ASKING RENT: Upon Request

TRANSPORTATION: **A C B D 1 2 3**

NEIGHBORS:



CONTACT OUR BROKERS FOR MORE INFORMATION

ELI YADID
EYadid@ksrny.com
917.770.9173

ORI MELLOUL
OMelloul@ksrny.com
347.377.1392

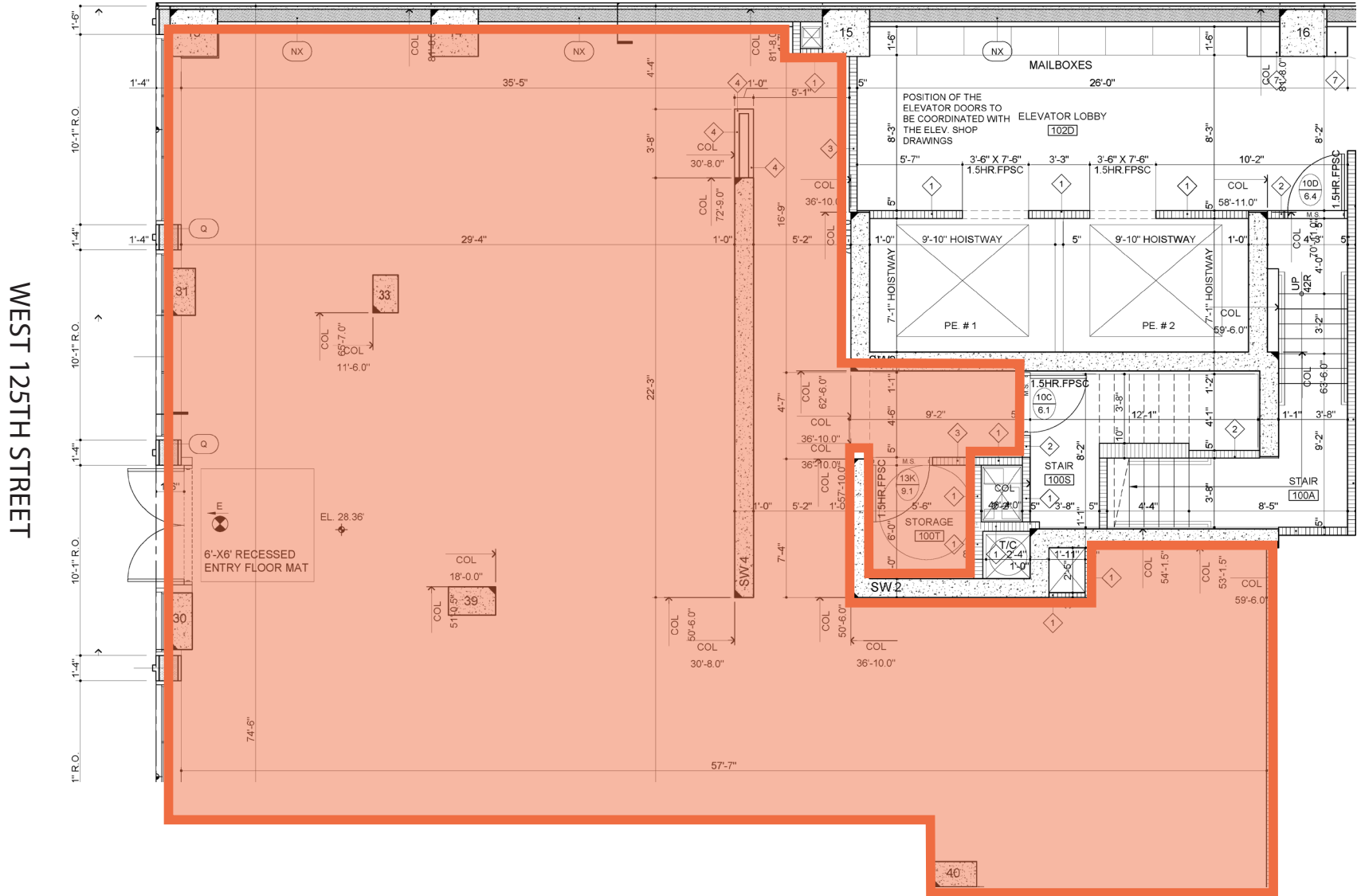
All information supplied in this marketing presentation and/or flyer is from sources deemed reliable and is furnished subject to errors, omissions, modifications, removal of listings from sale/lease and to any listing condition. Any square footage, dimensions, floor plans and/or technical data set forth are approximations and are subject to further elaboration/confirmation.



362 WEST 125th STREET

BETWEEN ST NICHOLAS & MORNINGSIDE AVENUES
HARLEM

FLOOR PLANS: GROUND FLOOR - 2,035 SF



362

WEST 125th STREET

BETWEEN ST NICHOLAS & MORNINGSIDE AVENUES
HARLEM



**FITNESS
FACTORY**
HEALTH CLUB

