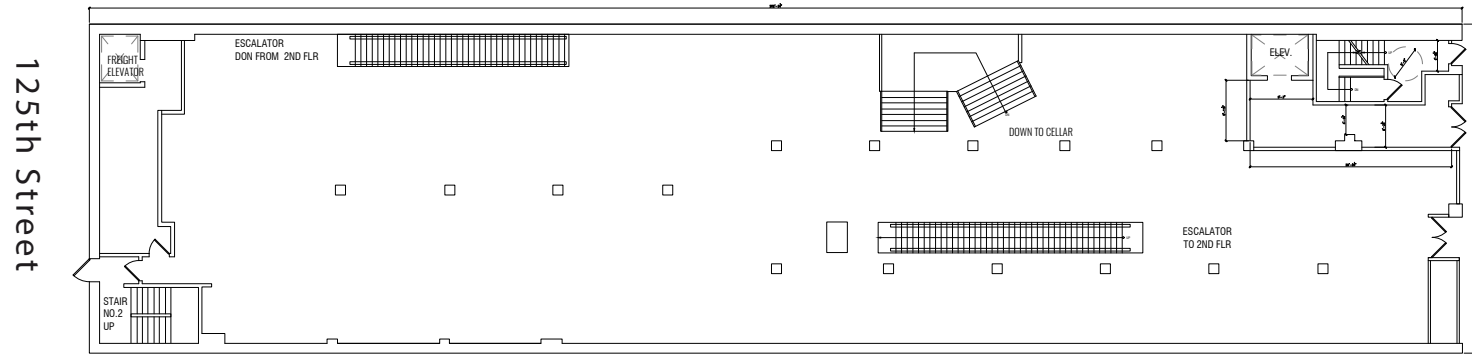


226-228 WEST 125TH ST

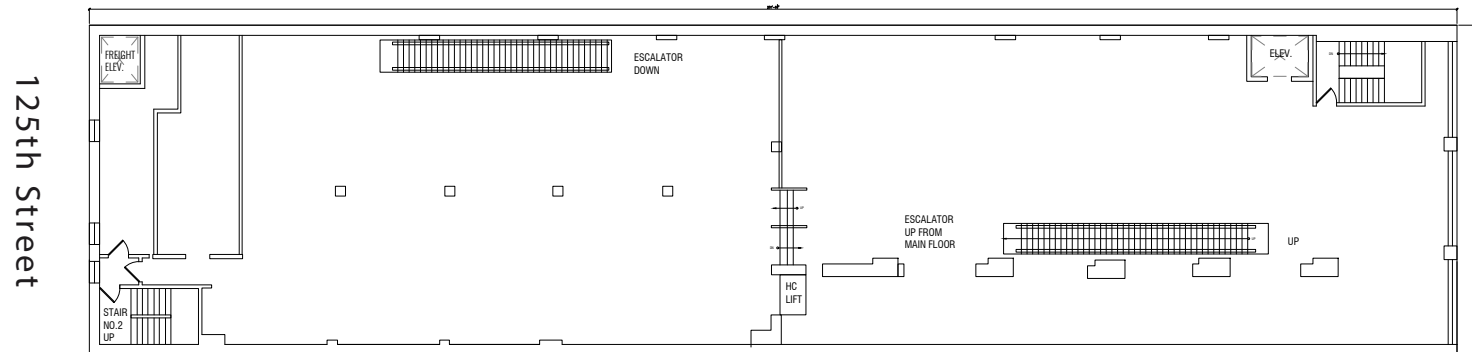
Between Adam Clayton Powell & Frederick Douglas Blvd
Flagship Harlem Retail

Floor Plans - Existing Conditions:

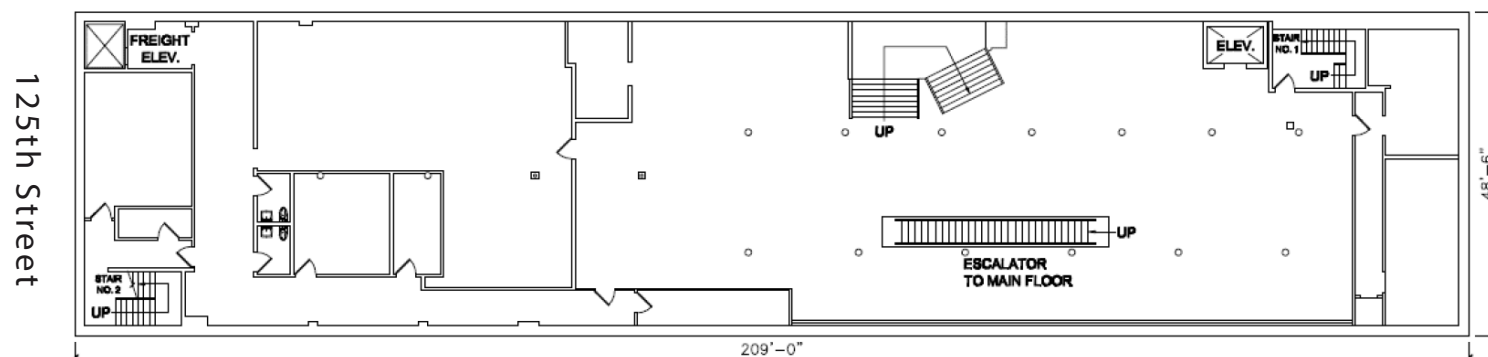
Ground Floor - 10,000 SF (49' x 202')



Selling Second Floor - 10,000 SF (49' x 202')



Selling Lower Level - 10,000 SF (49' x 202')

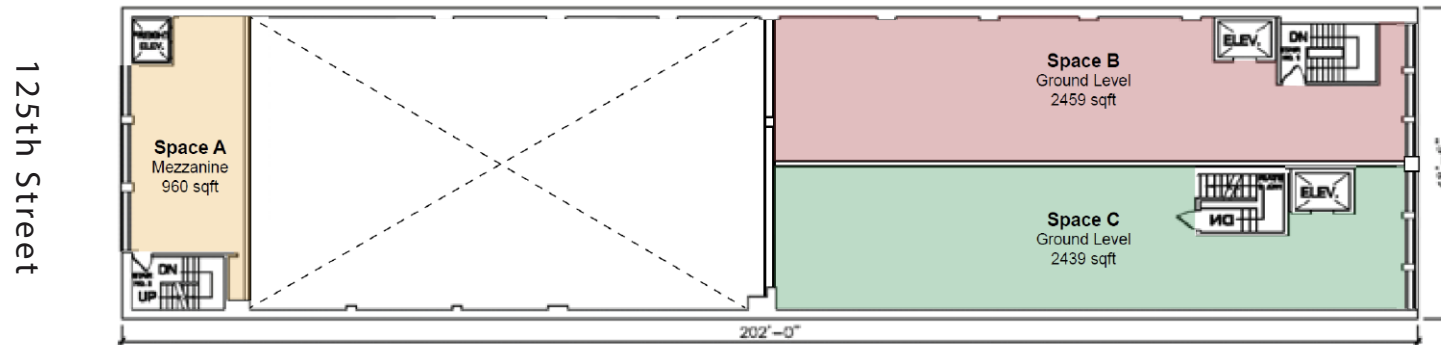


226-228 WEST 125TH ST

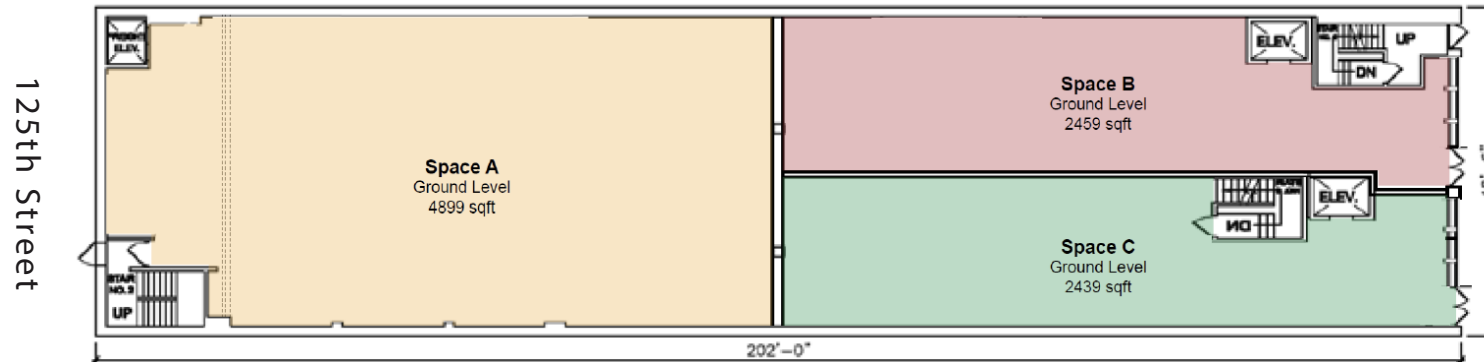
Between Adam Clayton Powell & Frederick Douglas Blvd
Flagship Harlem Retail

Floor Plans - Potential Divisions:

Ground Floor - 10,000 SF (49' x 202')



Selling Second Floor - 10,000 SF (49' x 202')



Selling Lower Level - 10,000 SF (49' x 202')

