

214-80 JAMAICA AVENUE

BETWEEN VANDEVEER & 215TH STREETS | QUEENS VILLAGE



214-80 JAMAICA AVENUE

BETWEEN VANDEVEER & 215TH STREETS | QUEENS VILLAGE

PROPERTY HIGHLIGHTS

- Medical space
- High foot traffic area
- Dense residential neighborhood
- Neighbors Include:
Dollar Tree, Clean Rite Cleaners, TD Bank, Key Food, BP, Novo Dialysis, & many more!

SIZE: 2,860 SF Ground Floor
3,100 SF Cellar
7,800 SF Second Floor
13,760 SF Total

FRONTAGE: 40'

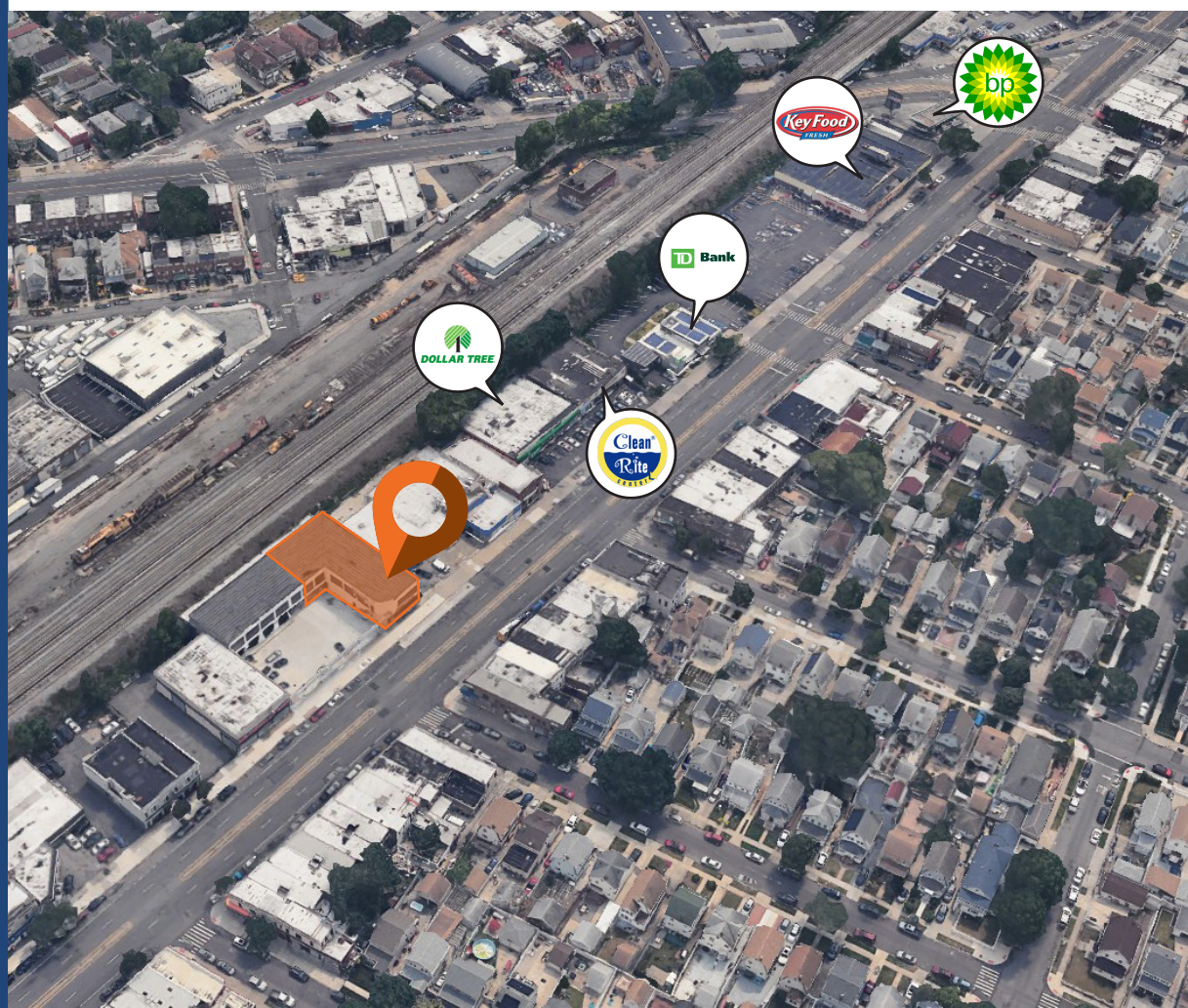
POSSESSION: Immediate

ASKING RENT: Upon Request

TRANSPORTATION:  Long Island Rail Road



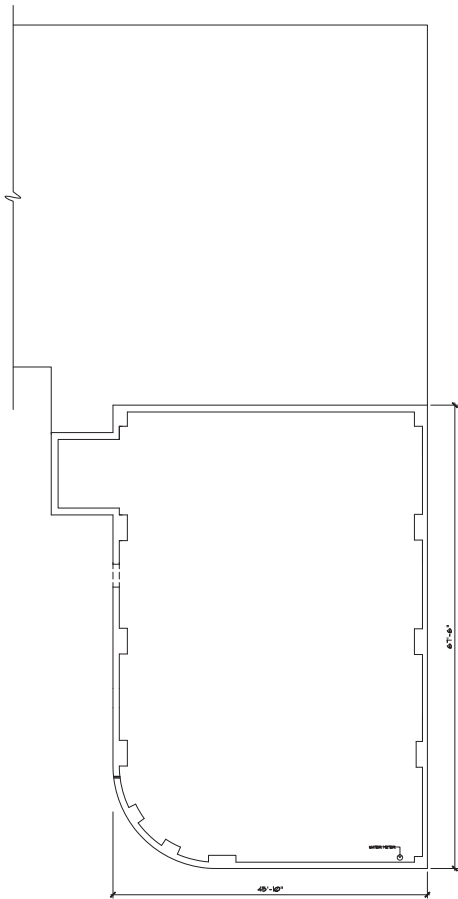
All information supplied in this marketing presentation and/or flyer is from sources deemed reliable and is furnished subject to errors, omissions, modifications, removal of listings from sale/lease and to any listing condition. Any square footage, dimensions, floor plans and/or technical data set forth are approximations and are subject to further elaboration/confirmation.



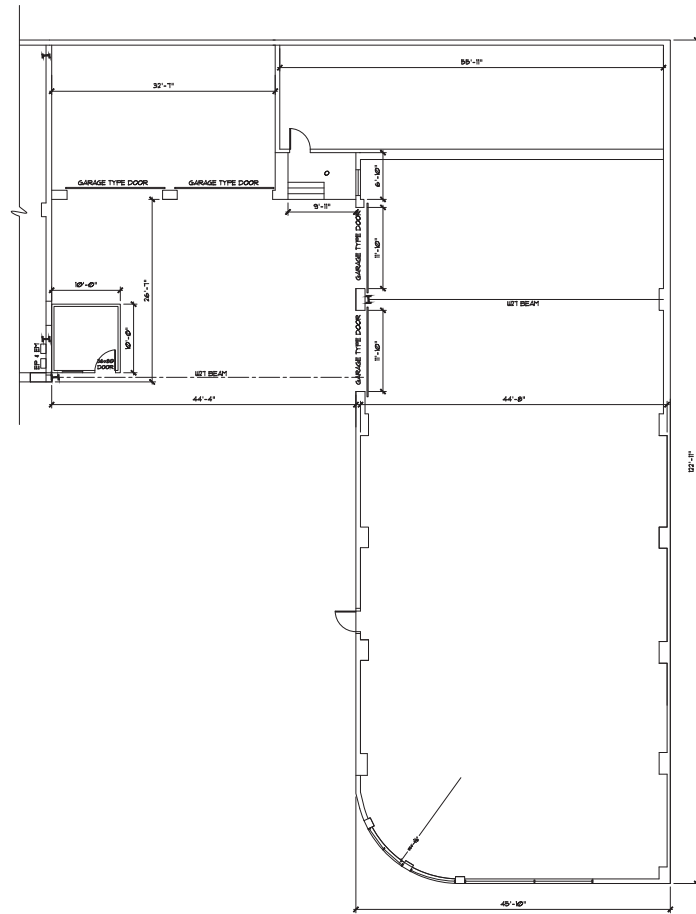
214-80 JAMAICA AVENUE

BETWEEN VANDEVEER & 215TH STREETS | QUEENS VILLAGE

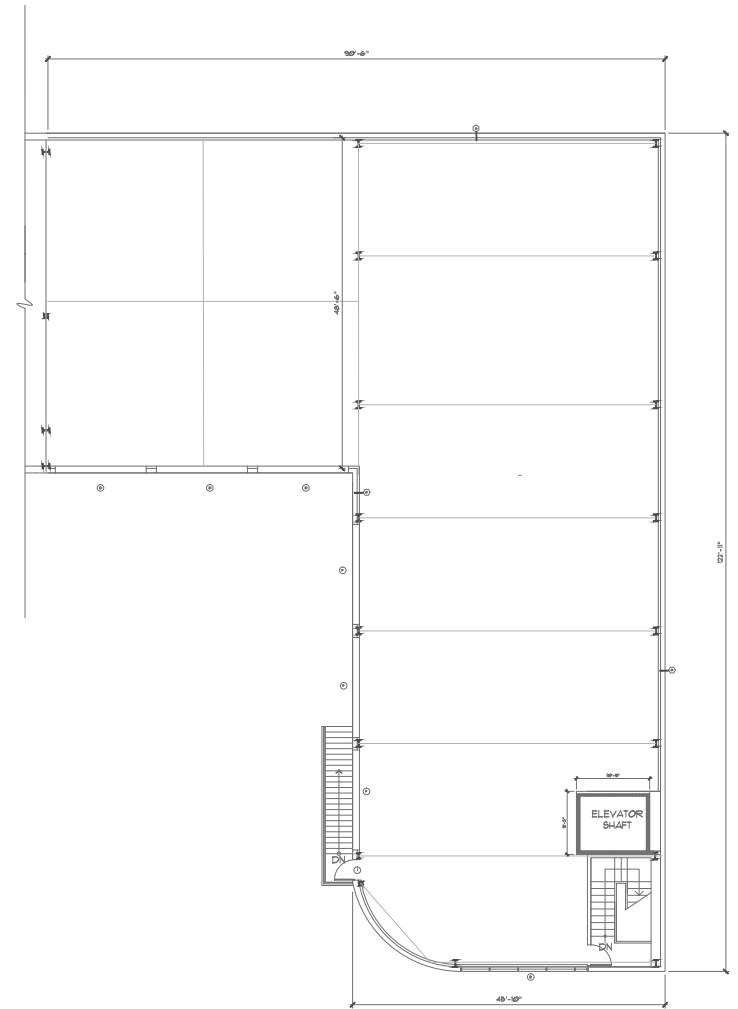
FLOOR PLANS:



CELLAR
3,100 SF



GROUND FLOOR
2,860 SF



SECOND FLOOR
7,800 SF



214-80 JAMAICA AVENUE

BETWEEN VANDEVEER & 215TH STREETS | QUEENS VILLAGE

FOR MORE INFORMATION,
PLEASE CONTACT:

JOSH BERKUN

516.459.9251 | JBerkun@ksrny.com

MARK GALLUCCI

718.551.5387 | MGallucci@ksrny.com

