

38-40 CARMINE STREET

BETWEEN BLEECKER & BEDFORD STREETS | GREENWICH VILLAGE



TEMPERANCE

38-40

TEMPERANCE

38-40 CARMINE STREET

BETWEEN BLEECKER & BEDFORD STREETS | GREENWICH VILLAGE

PROPERTY HIGHLIGHTS

- Turn Key Restaurant
- Fully Vented with Gas
- Dual Frontage
- Charming Backyard
- BEER & WINE ONLY
- High foot traffic area
- Dense residential neighborhood
- Neighboring tenants include:

Jack's Wife Frieda, Dig, Molly's Cupcakes, Luke's Lobster, heavenly Market, Urbani, Joe's Pizza, Juice Generation, Tacombi, Kazu Nori, Mila Moscani, IFC Center, & many more!

SIZE: 1,500 SF Ground Floor
1,500 SF Basement
400 Back Patio

FRONTAGE: 30'

CEILING HEIGHT: 10'

POSSESSION: Immediate

ASKING RENT: Upon Request

TRANSPORTATION: A C E B D F M



38-40 CARMINE STREET

BETWEEN BLEECKER & BEDFORD STREETS | GREENWICH VILLAGE

FLOOR PLANS:

GROUND FLOOR - 1,500 SF

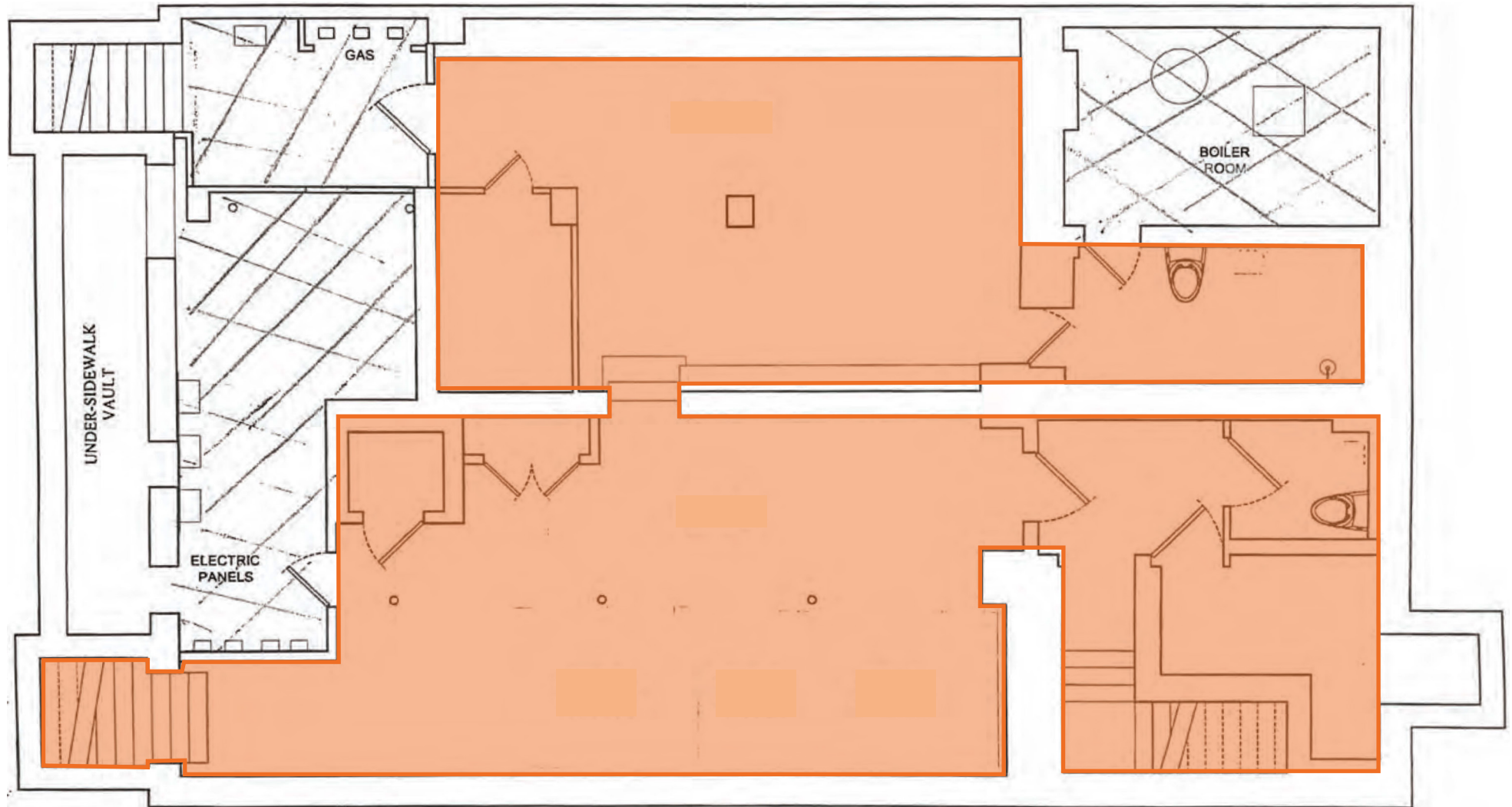
BACK PATIO - 400 SF



38-40 CARMINE STREET

BETWEEN BLEECKER & BEDFORD STREETS | GREENWICH VILLAGE

FLOOR PLANS:
BASEMENT - 1,500 SF



38-40 CARMINE STREET

BETWEEN BLEECKER & BEDFORD STREETS | GREENWICH VILLAGE

PROPERTY PHOTOS:



38-40 CARMINE STREET

BETWEEN BLEECKER & BEDFORD STREETS | GREENWICH VILLAGE

FOR MORE INFORMATION,
PLEASE CONTACT:

SAMUEL CHERA

718.614.1731 | SChera@ksrny.com

CAROLINA AZIZ

516.640.6961 | CAziz@ksrny.com

IKE BIBI

347.417.2860 | IBibi@ksrny.com

